

NW1/4 NW1/4 SEC.23 T.26S. R.2W. W.M.
DOUGLAS COUNTY

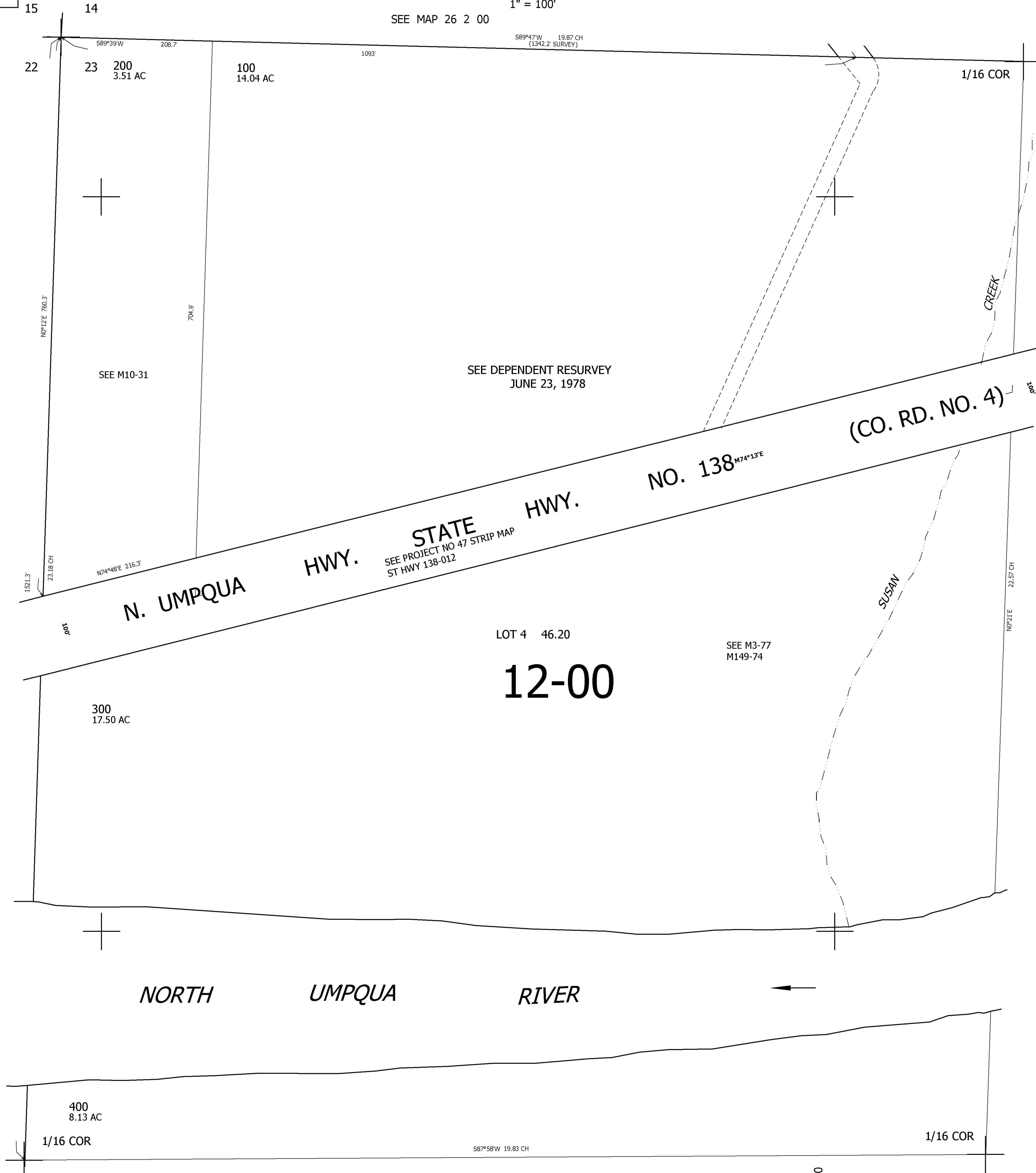
REVISED ON
2-8-95

26 2 23BB

THIS MAP WAS PREPARED FOR
ASSESSMENT PURPOSE ONLY.

1" = 100'

SEE MAP 26 2 00



CANCELLED NOS
300M1

SEE MAP 26 2 00

SEE MAP 26 2 00

603,000

SEE MAP 26 2 00

4,280,000

26 2 23BB