

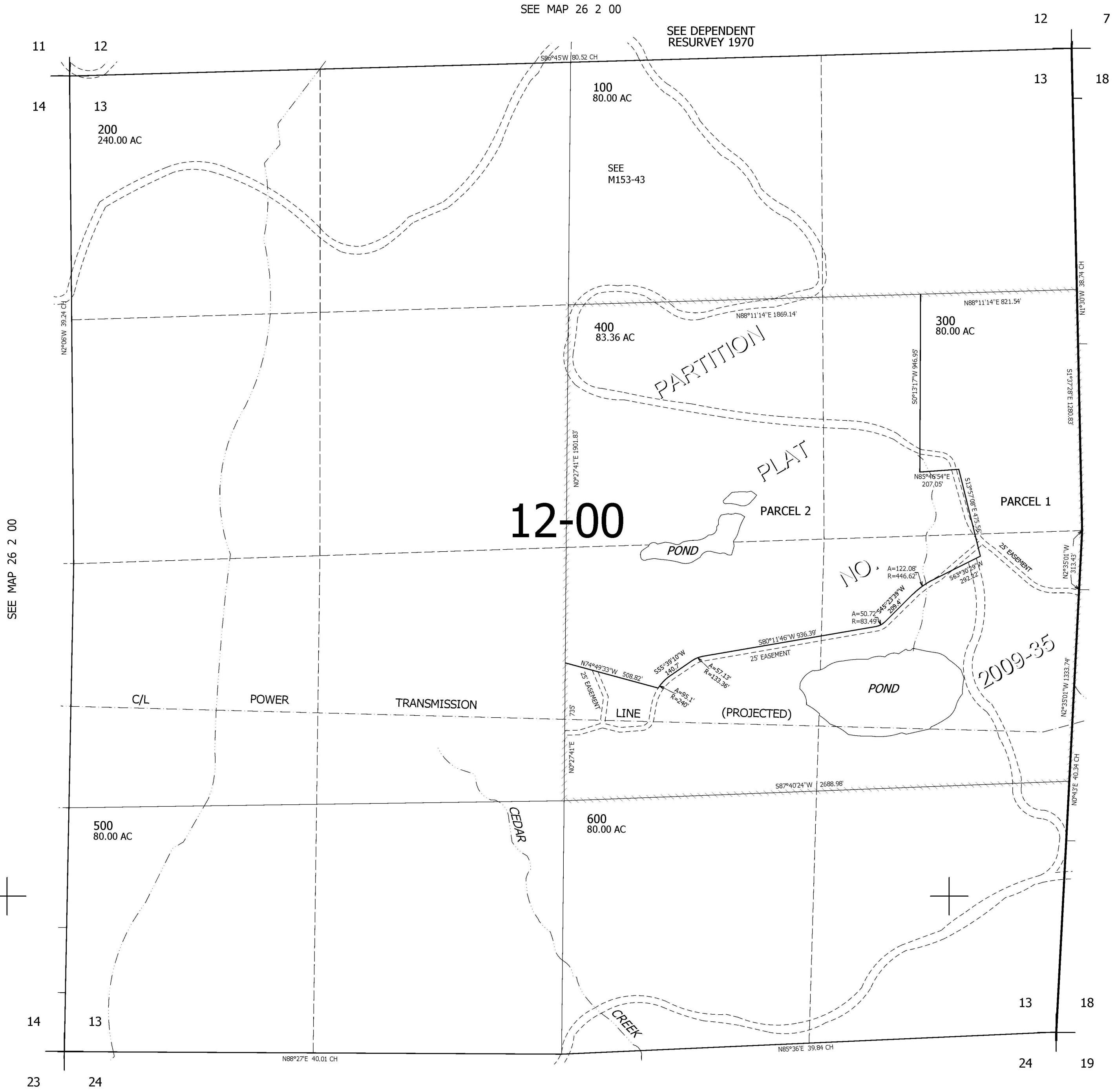
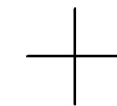
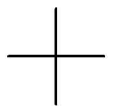
THIS MAP WAS PREPARED FOR ASSESSMENT PURPOSE ONLY.

SEC.13 T.26S. R.2W. W.M. DOUGLAS COUNTY

1" = 400'

REVISED ON
7-8-09

26 2 13



CANCELLED NOS
301 401

SEE MAP 26 1 00

SEE MAP 26 2 00

SEE MAP 26 2 00

4,289,000

605,000

26 2 13