

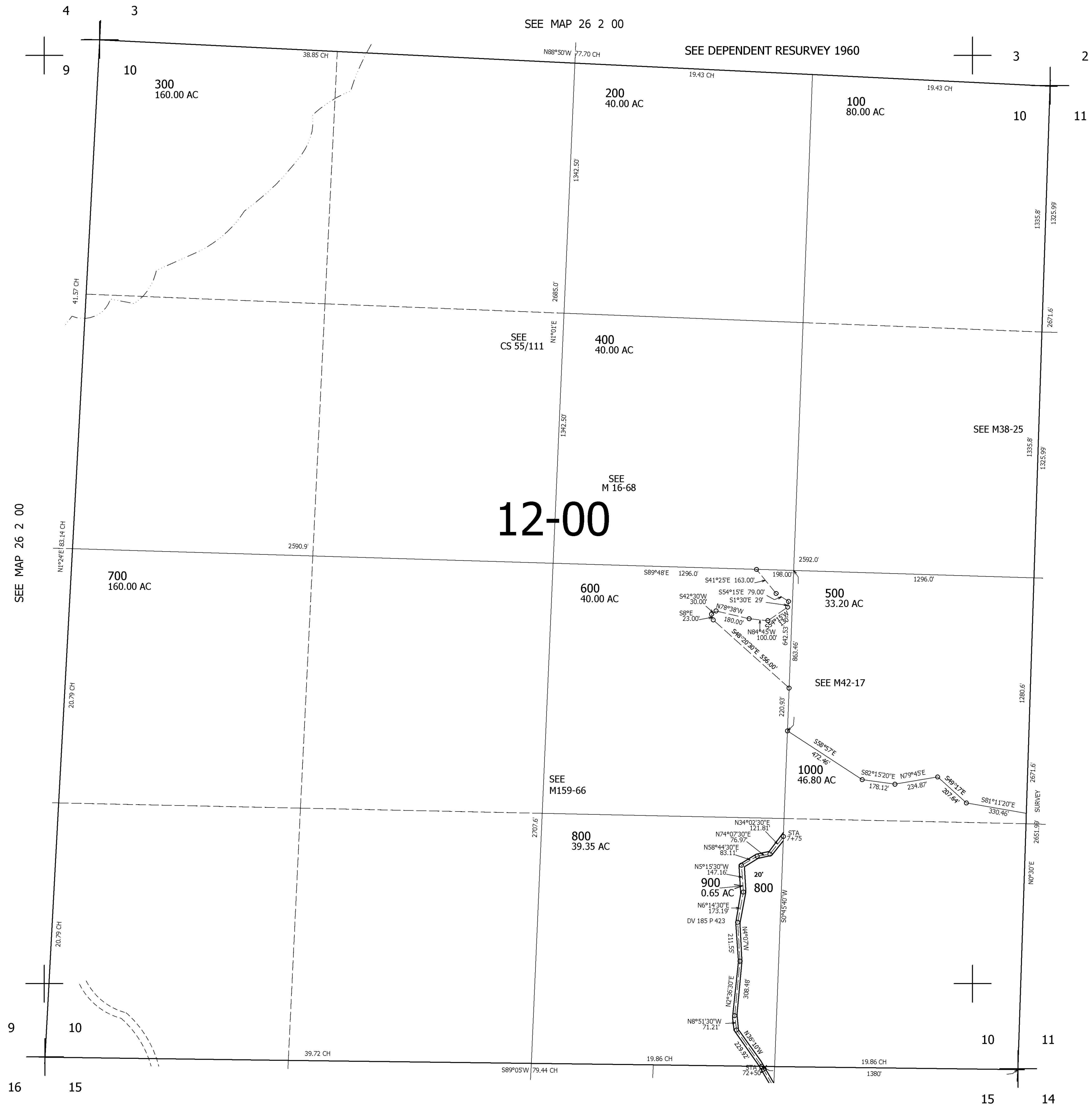
THIS MAP WAS PREPARED FOR ASSESSMENT PURPOSE ONLY.

SEC.10 T.26S. R.2W. W.M. DOUGLAS COUNTY

1" = 400'

REVISED ON

26 2 10



CANCELLED NOS
600M1

610,000

SEE MAP 26 2 00

SEE MAP 26 2 15A

4,279,000

26 2 10