

THIS MAP WAS PREPARED FOR ASSESSMENT PURPOSE ONLY.

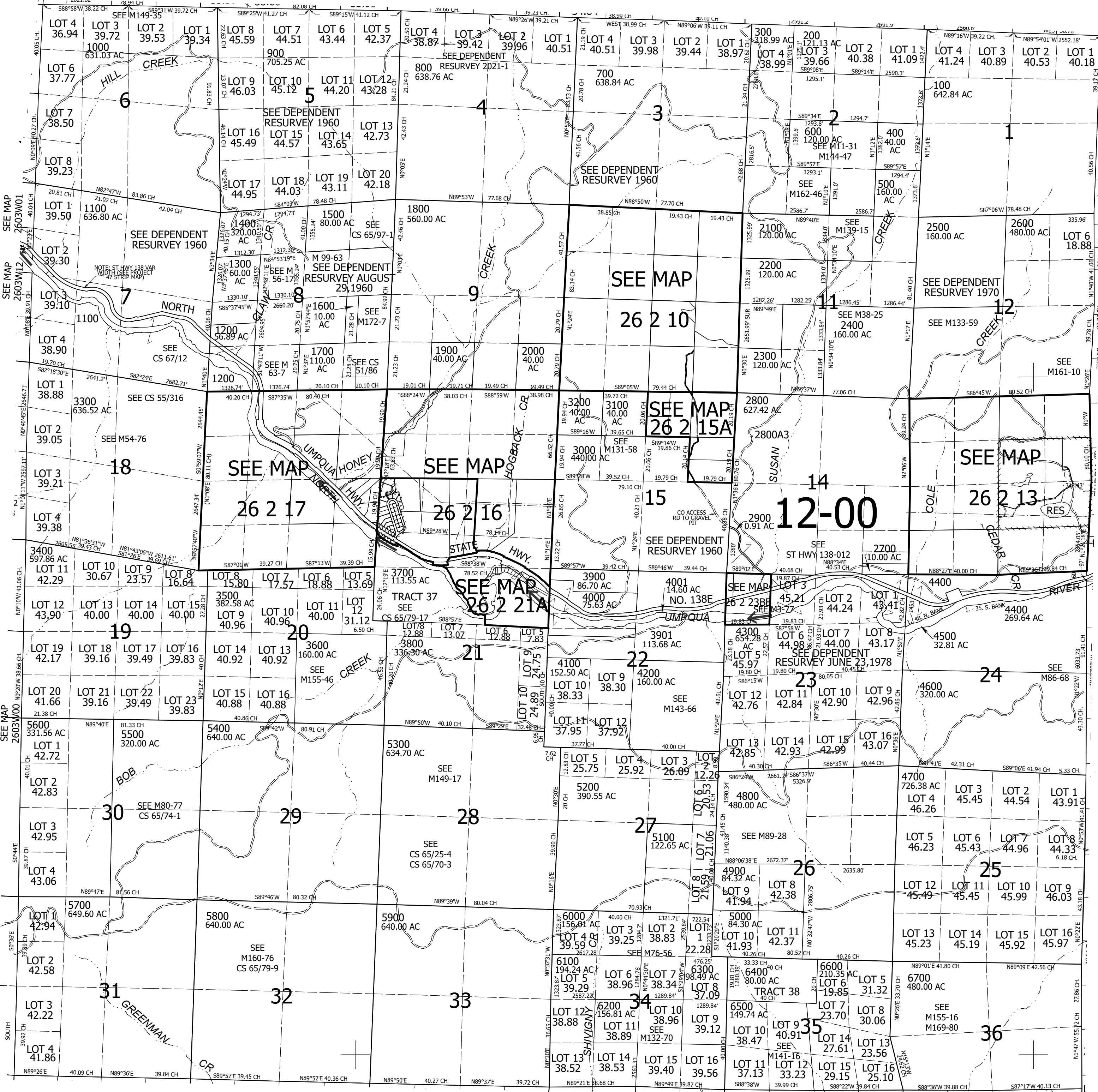
Upper Left:
123°0'30"W 43°20'48"N
4254197E 622301N ft

T.26S. R.02W. W.M.
DOUGLAS COUNTY
1" = 2,000'

Date Exported 2023-08-02

CANCELLED NOS:
2800A2 2800A1 3902
4501M1 5200M1 5800M1
4501

PARCEL 4500
(NORTH BANK)
P.O.B. BEARS S1°42'W 1453'
FR NW COR SEC 24
1. N85°18'30"E 155'
2. N78°25'E 160'
3. N64°12'E 130'
4. N53°29'E 148'
5. N50°44'30"E 133'
6. N60°40'E 62'
7. N69°10'30"E 98'
8. N40°45'E 215'
9. N61°40'E 211'
10. N72°48'E 155'
11. N66°29'E 98'
12. N63°13'30"E 100'
13. N54°00'30"E 142'
14. S77°08'30"E 140'
15. N62°52'30"E 67'
16. N69°45'30"E 173'
17. N72°51'30"E 162'
18. N76°47'E 102'
19. S75°20'30"E 72'
20. N58°40'30"E 158'
21. N39°37'30"E 95'
22. N67°58'30"E 192'
23. N85°34'E 73'
24. S76°18'E 140'
25. S87°09'30"E 93'
26. N76°04'30"E 90'
27. N89°09'E 141'
28. N72°55'E 159'
29. N88°37'E 87'
30. N63°08'30"E 52'
31. N5°41'30"E 64'
32. N70°08'30"E 135'
33. S86°16'30"E 49'
34. S66°43'30"E 92'
35. N86°03'30"E 113'
36. N62°24'30"E 90'
37. N77°15'30"E 61'
38. N72°46'30"E 119'
39. N51°53'E 76'
40. N63°05'30"E 131'
41. N72°02'30"E 138'
42. N68°43'E 101'
43. N62°34'E 149'
44. N81°00'30"E 77'
45. N69°35'30"E 165'
46. N84°54'30"E 156'
47. N73°31'30"E 222'
48. N69°04'E 63'
BEARS S1°22'E 97'
FR NE COR SEC 24
BEARS N1°22'W 215'
FR SOUTH BANK
(SOUTH BANK)
1. S3°02'W 108.1'
2. S88°29'W 105.8'
3. S72°25'W 185.9'
4. S76°34'W 220.8'
5. S70°15'W 275.1'
6. S67°17'W 184'
7. S69°03'W 211'
8. S75°49'W 129.6'
9. S75°07'W 107'
10. S80°04'W 159.9'
11. S67°01'W 141.3'
12. S66°45'W 98.8'
13. S59°02'W 91'
14. S76°23'W 79.9'
15. S85°27'W 99'
16. S81°03'W 105'
17. S84°12'W 126.9'
18. S74°40'W 174'
19. S83°20'W 142.9'
20. S79°36'W 236.5'
21. S83°44'W 208.2'
22. S83°31'W 244.8'
23. S70°52'W 284'
24. S73°08'W 154.9'
25. S69°W 219'
26. S73°04'W 144.9'
27. S53°W 246'
28. S53°59'W 263.7'
29. S63°27'W 123.3'
30. S55°22'W 116.2'
31. S65°32'W 218'
32. S63°34'W 140.6'
33. S70°36'W 167.6'
34. S77°14'W 160.9'
35. S89°42'W 71.9'
N1°42'E 345.5' TO P.O.B.



SEE MAP 2702W00

SEE MAP 2702W03

SEE MAP 2702W00

Lower Right:
122°51'26"W 43°15'16"N
4293443E 587525N ft