

THIS MAP WAS PREPARED FOR ASSESSMENT PURPOSE ONLY.

SW1/4 SEC.9 T.26S. R.1W. W.M.
DOUGLAS COUNTY

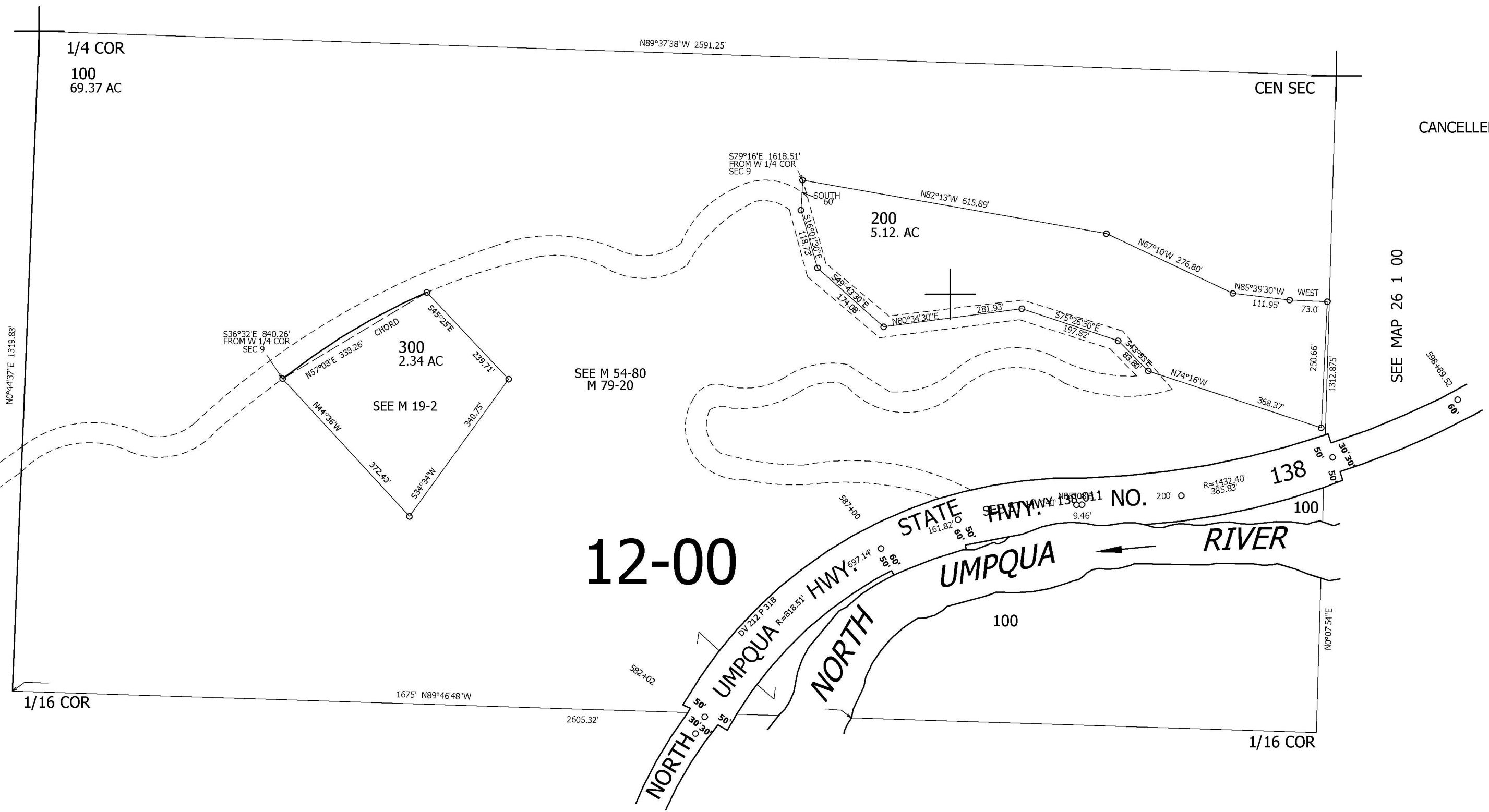
REVISED ON

26 1 9C

1" = 200'

SEE MAP 26 1 00

SEE MAP 26 1 00



SEE MAP 26 1 00

8	9
17	16

609,000

1/4 COR

4,302,000

26 1 9C