

THIS MAP WAS PREPARED FOR ASSESSMENT PURPOSE ONLY.

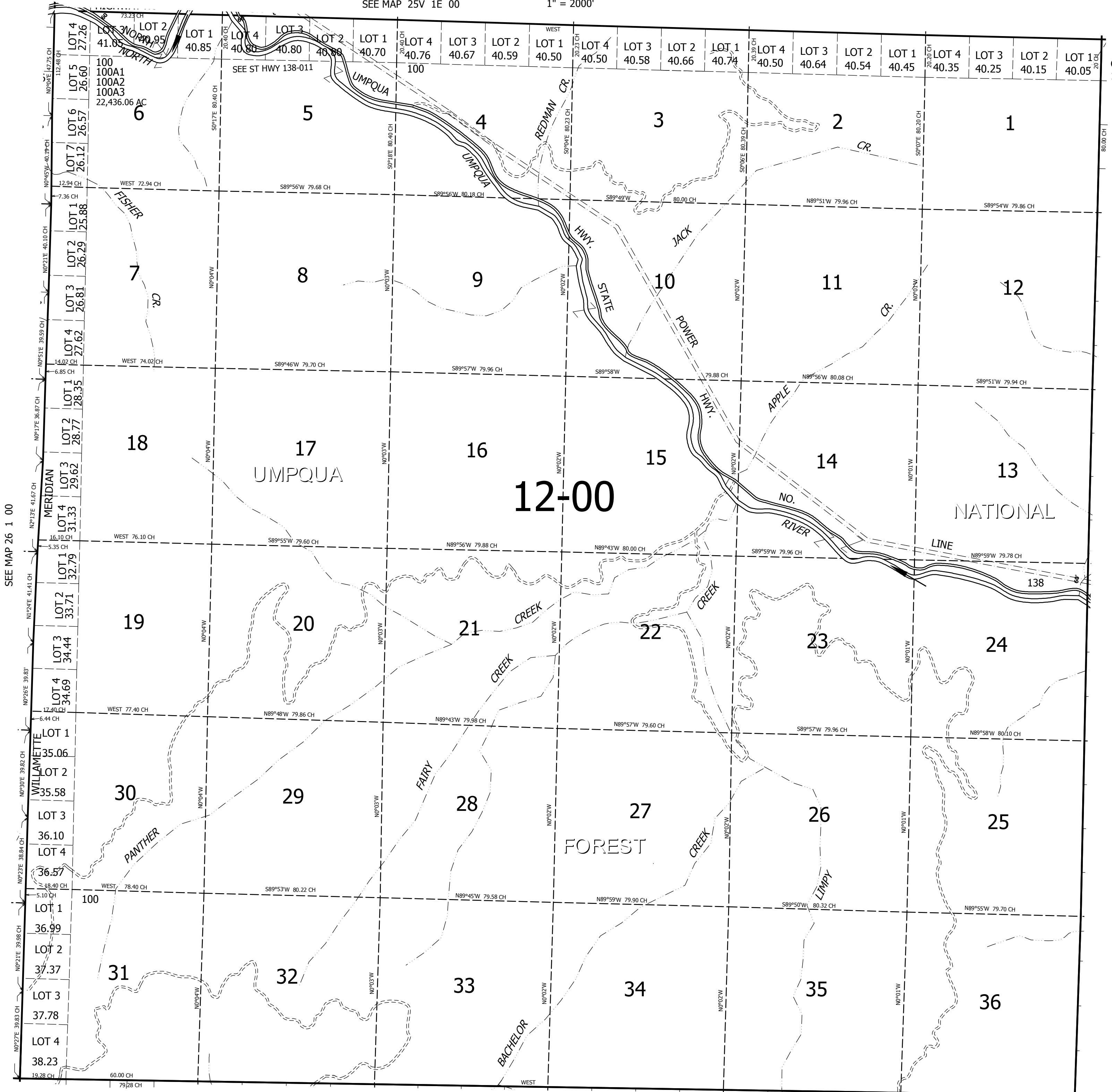
T.26S. R.1E. W.M. DOUGLAS COUNTY

REVISED ON 6-1-12

26 1E 00

SEE MAP 25V 1E 00

1" = 2000'



CANCELLED NO'S 100A4

SEE MAP 26 1 00

SEE MAP 26 2E 00

SEE MAP 27 1E 00

26 1E 00