

THIS MAP WAS PREPARED FOR  
ASSESSMENT PURPOSE ONLY.

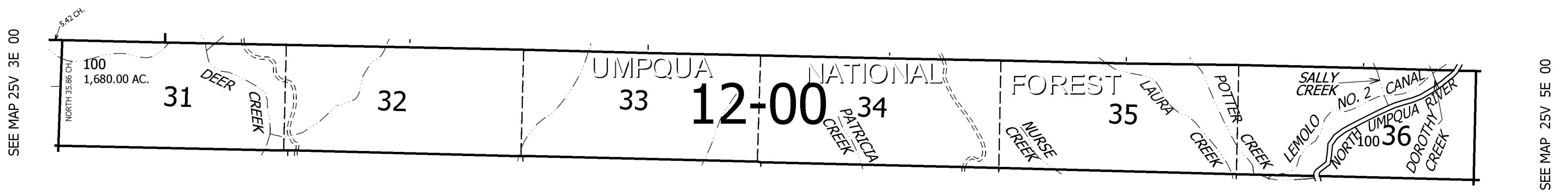
T.25 1/2S. R.4E. W.M.  
DOUGLAS COUNTY  
1" = 2000'

REVISED ON

25V 4E 00

CANCELLED NO'S

SEE MAP 25 4E 00



SEE MAP 26 4E 00

25V 4E 00