

T.25S. R.9W. W.M.  
DOUGLAS COUNTY

1" = 2000'

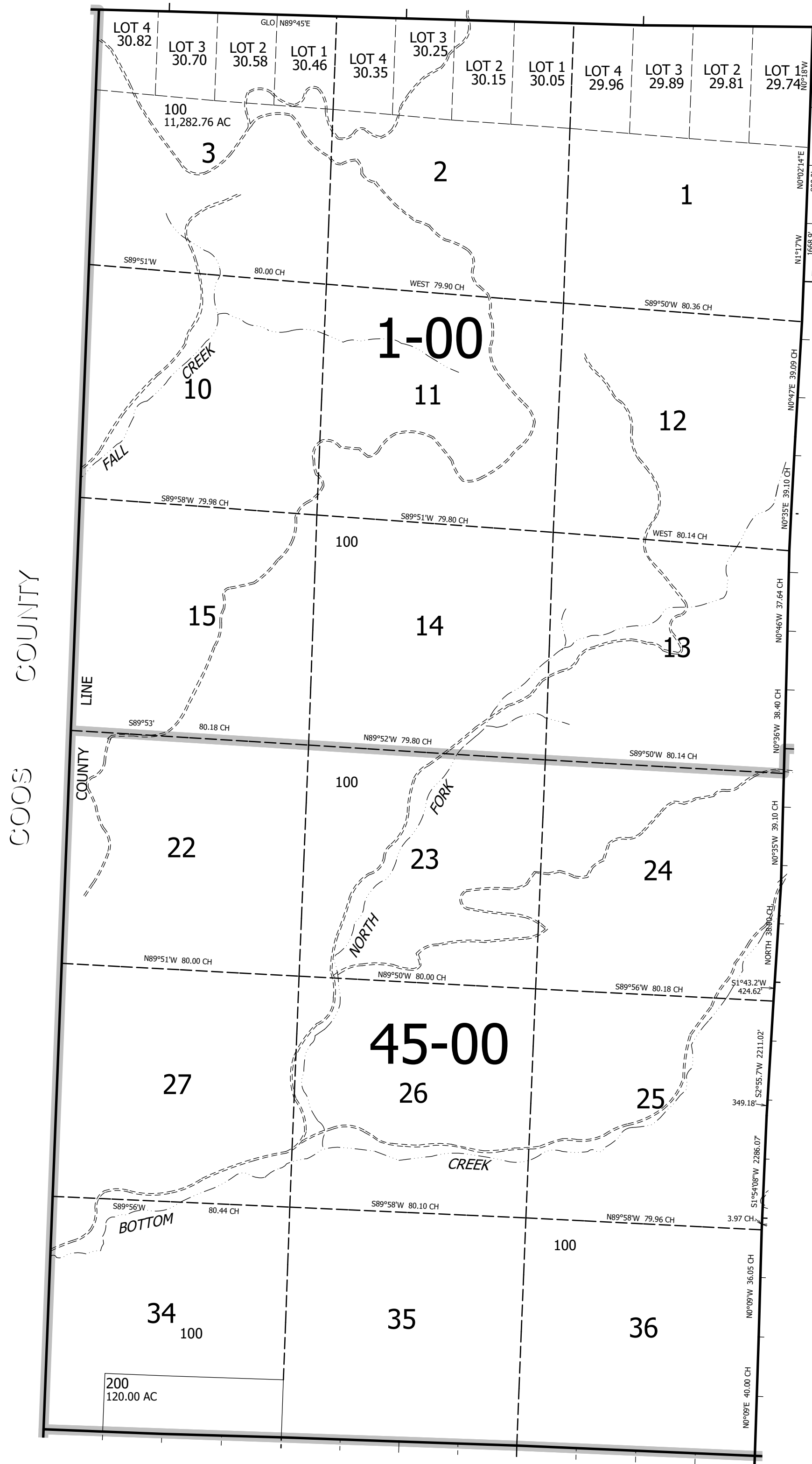
SEE MAP 24 9 00

REVISED ON

25 9 00

THIS MAP WAS PREPARED FOR  
ASSESSMENT PURPOSE ONLY.

CANCELLED NOS



SEE MAP 25 8 00

SEE MAP 26 9 00

630,000

25 9 00

4,074,000