

THIS MAP WAS PREPARED FOR ASSESSMENT PURPOSE ONLY.

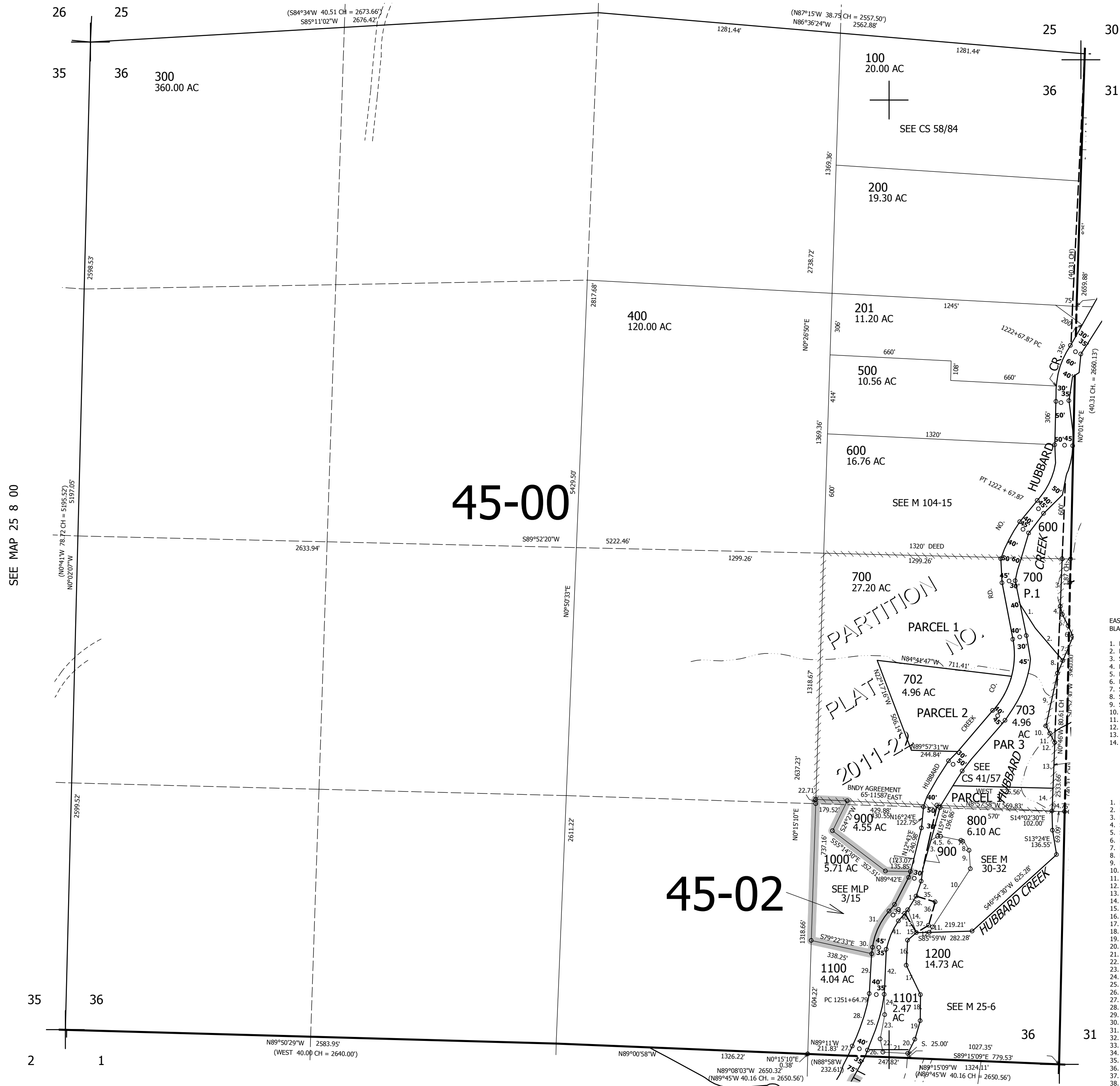
SEC.36 T.25S. R.8W. W.M. DOUGLAS COUNTY

1" = 400'

REVISED ON 8-26-11

25 8 36

SEE MAP 25 8 00



45-00

45-02

PARTITION PLAT NO. 2011-22

CANCELLED NOS 202

SEE MAP 25 7 31

- EAST LINE PP 2011-22 & BIA INST 2011-11094
1. N34°00'00\"/>

1. N26°57'30\"/>

627,000

SEE MAP 26 8 00

SEE MAP 26 8 1A

25 8 36