

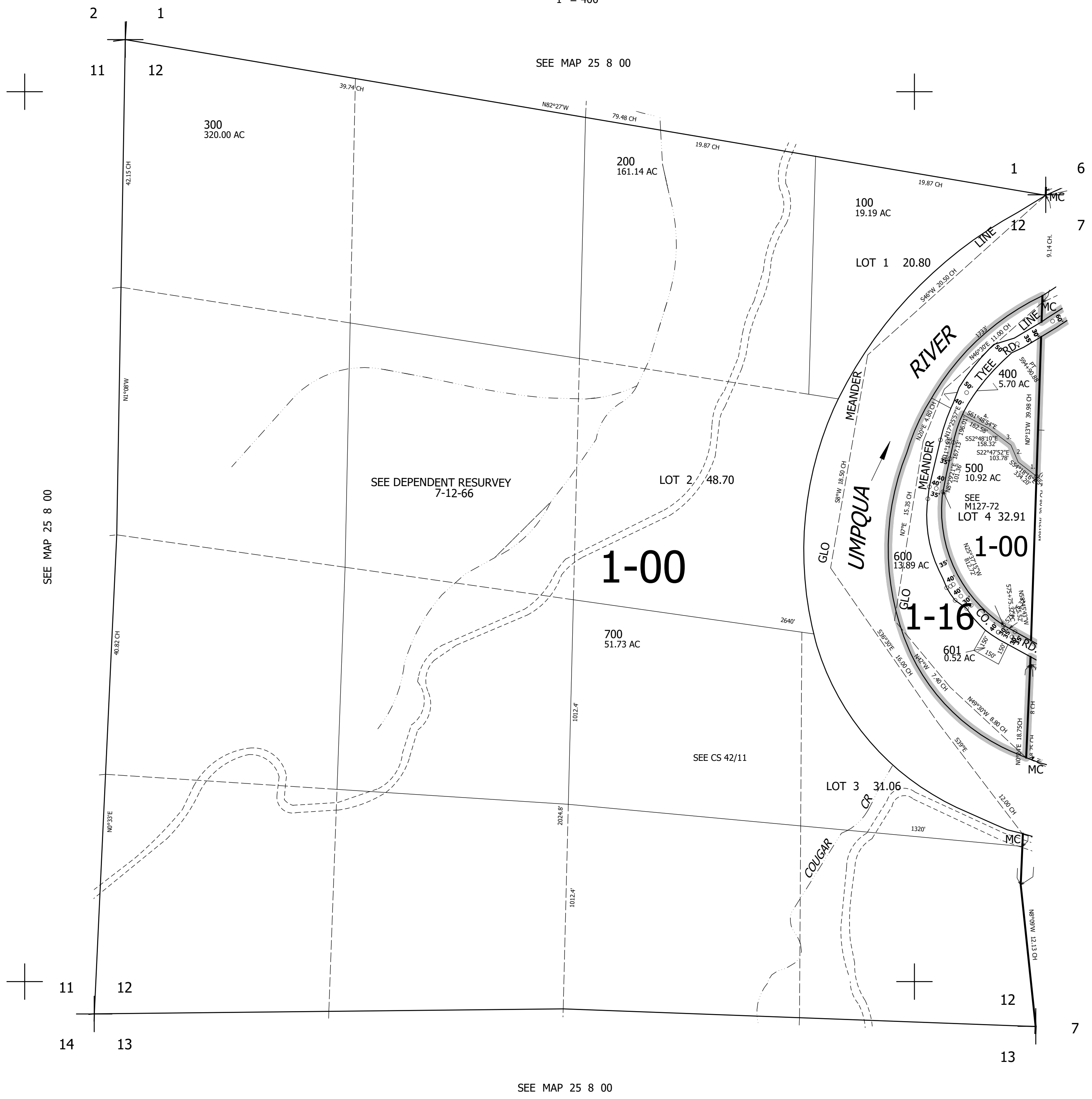
THIS MAP WAS PREPARED FOR ASSESSMENT PURPOSE ONLY.

SEC.12 T.25S. R.8W. W.M.
DOUGLAS COUNTY

1" = 400'

REVISED ON
12-27-21

25 8 12



CANCELLED NOS
600U1 600U2 601U1
601U2

PARCEL 400
1. N54°30'W 334.6'
2. N23°00'W 103.7'
3. N53°00'W 158.5'
4. N62°W 265.9'

SEE MAP 25 7 7

649,000

SEE MAP 25 8 00

4,101,000

25 8 12