

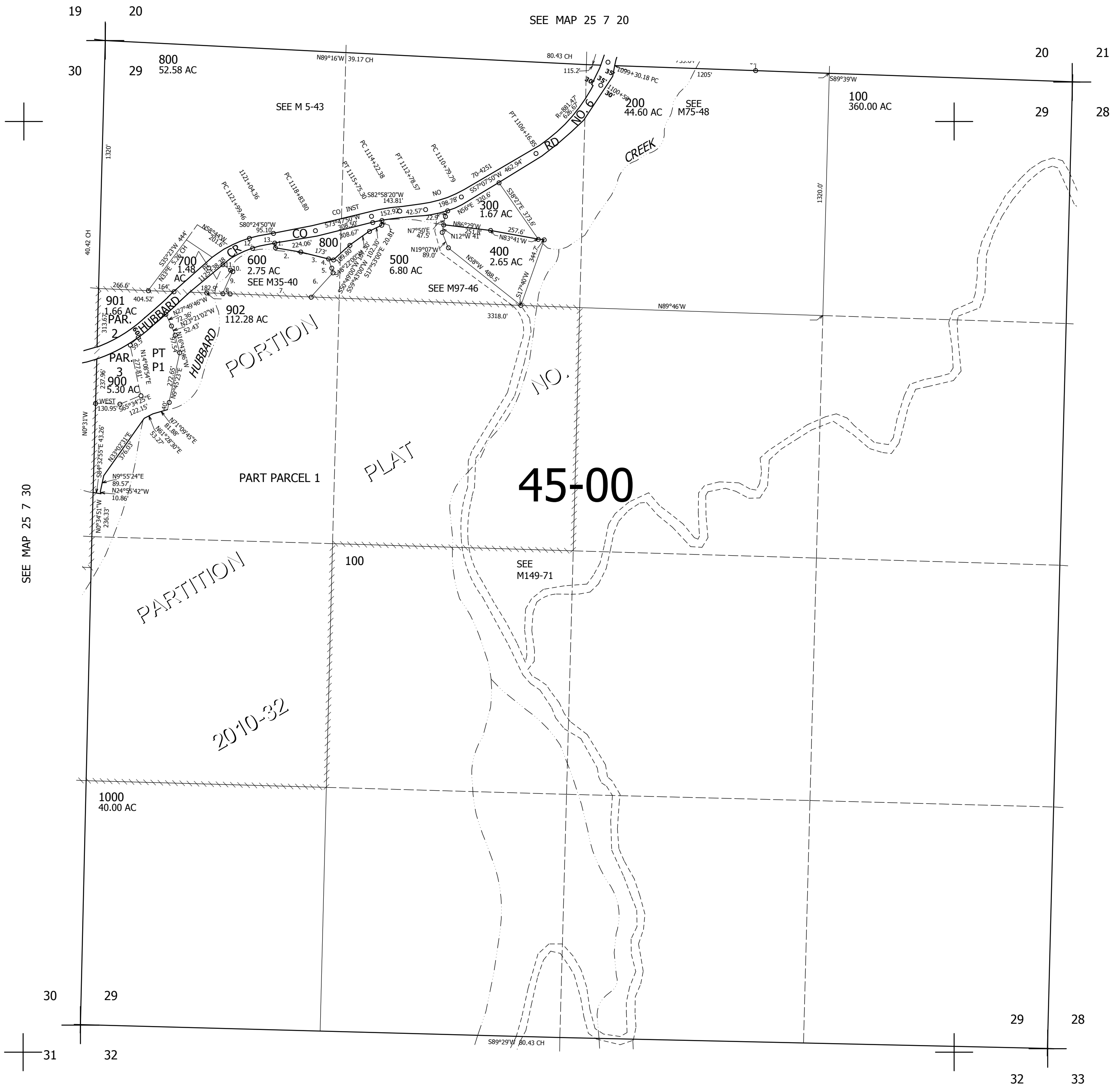
THIS MAP WAS PREPARED FOR ASSESSMENT PURPOSE ONLY.

SEC.29 T.25S. R.7W. W.M.
DOUGLAS COUNTY

REVISED ON
8-21-14

25 7 29

1" = 400'



CANCELLED NOS
903

SEE MAP 25 7 28

SEE MAP 25 7 30

- PARCEL 600
1. S9°10'26"E 25.00'
 2. S83°53'03"E 137.81'
 3. S79°13'00"E 155.00'
 4. S7°00'55"E 52.24'
 5. S7°00'55"E 25.73'
 6. S49°03'00"W 176.00'
 7. N89°13'25"W 435.95'
 8. N89°13'25"W 38.75'
 9. N19°57'32"E 139.00'
 10. N56°14'28"W 13.69'
 11. N56°14'28"W 33.68'
 12. R=537.96' L=219.43'
 13. N77°49'00"E 95.23'

632,000

SEE MAP 25 7 00

4,111,000

25 7 29