

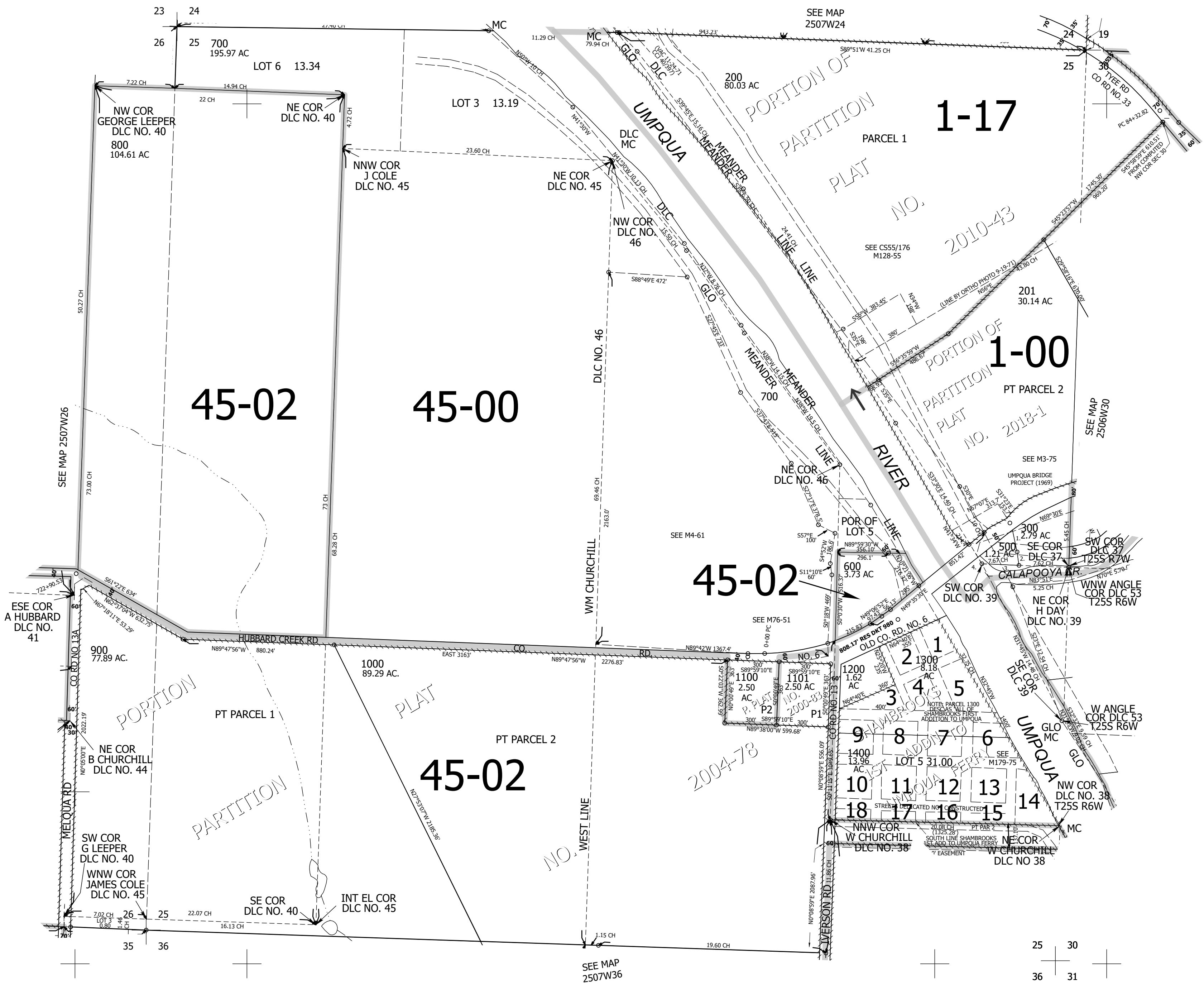
THIS MAP WAS PREPARED FOR ASSESSMENT PURPOSE ONLY.

Upper Left:
123°29'29"W 43°22'35"N
4126142E 637269N ft

SEC.25 T.25S. R.07W. W.M.
DOUGLAS COUNTY
1" = 400'

TAXLOT 500
1. S14°E 159.4'
2. S19°12'E 79.6'
3. N88°18'W 219.6'
4. N62°44'W 52.2'

CANCELLED NOS:
900M1 1000M1 1001
100 301 400
1100A1 202 1100A2



25 30
36 31