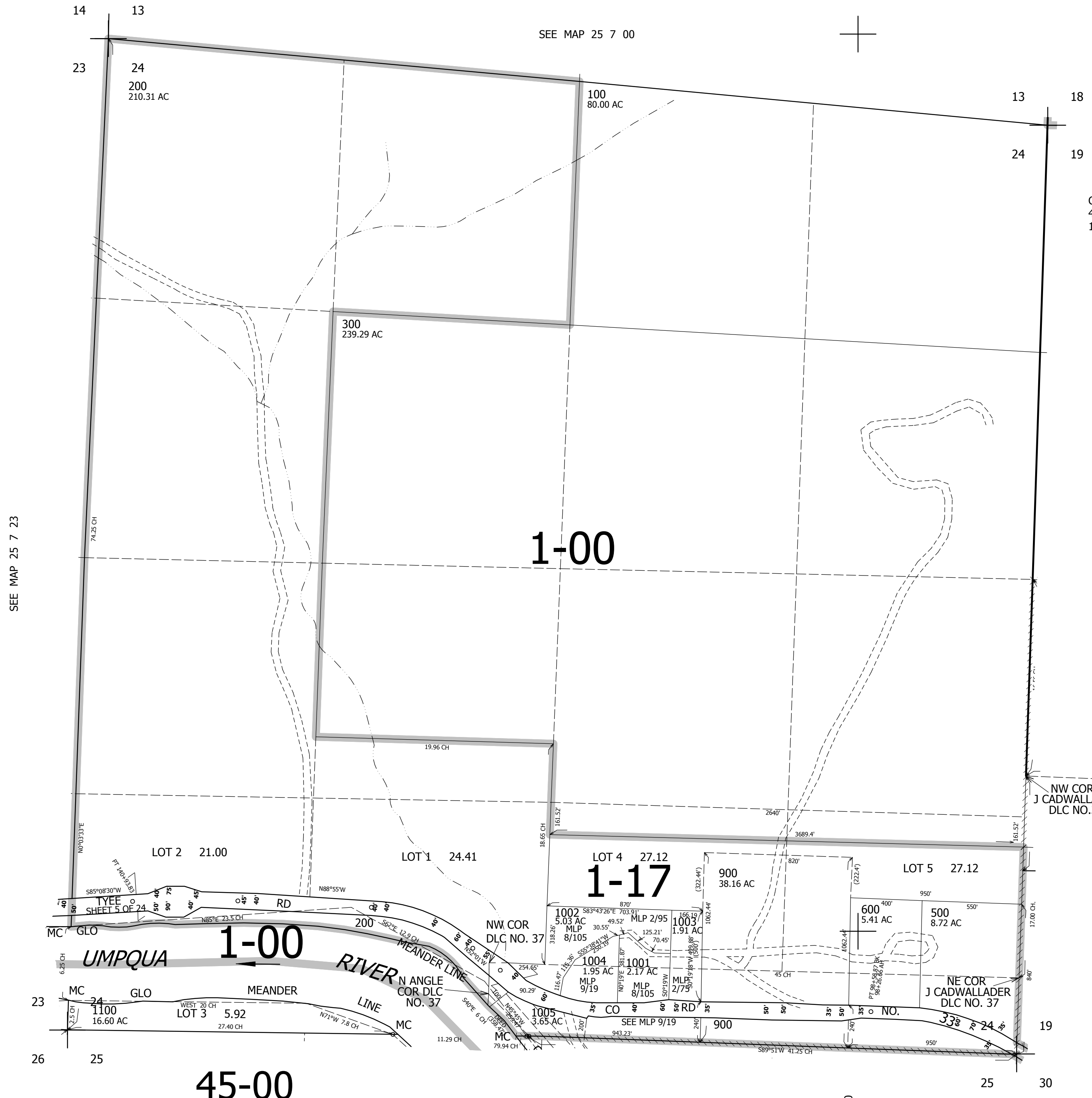
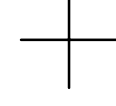
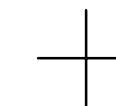
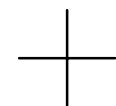


THIS MAP WAS PREPARED FOR ASSESSMENT PURPOSE ONLY.

SEC.24 T.25S. R.7W. W.M.
DOUGLAS COUNTY
1" = 400'

REVISED ON
2-22-08

25 7 24



SEE MAP 25 7 00

SEE MAP 25 7 23

SEE MAP 25 6 19

CANCELLED NOS
400 700 800
1000

NW COR
J CADWALLADER
DLC NO.37

637,000

45-00

SEE MAP 25 7 25

4,132,000

25 7 24