

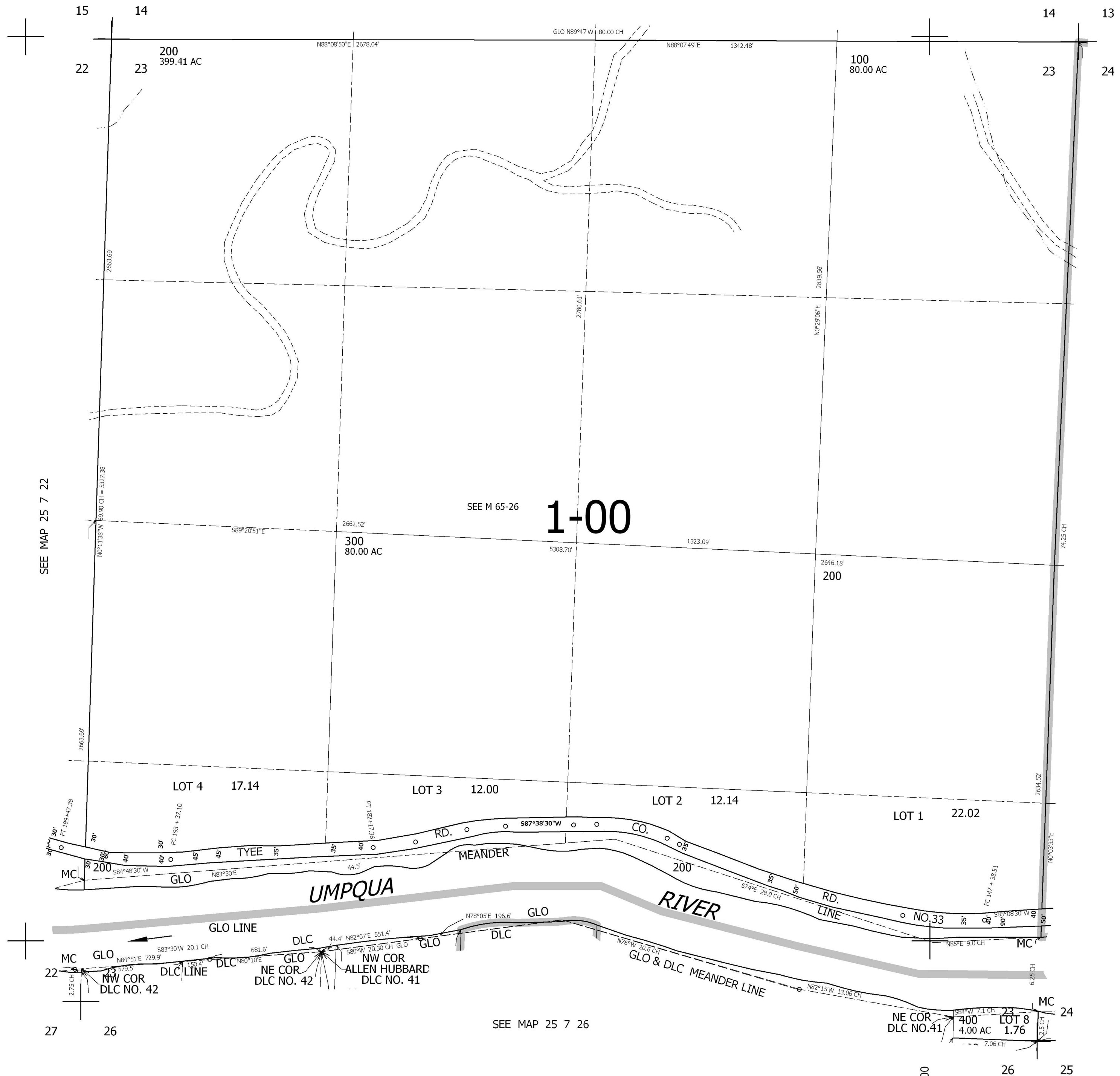
THIS MAP WAS PREPARED FOR
ASSESSMENT PURPOSE ONLY.

SEC.23 T.25S. R.7W. W.M.
DOUGLAS COUNTY
1" = 400'

REVISED ON
2-22-99

25 7 23

SEE MAP 25 7 14



CANCELLED NOS

SEE MAP 25 7 22

SEE M 65-26

1-00

SEE MAP 25 7 24

637,000

SEE MAP 25 7 26

4,127,000

25 7 23