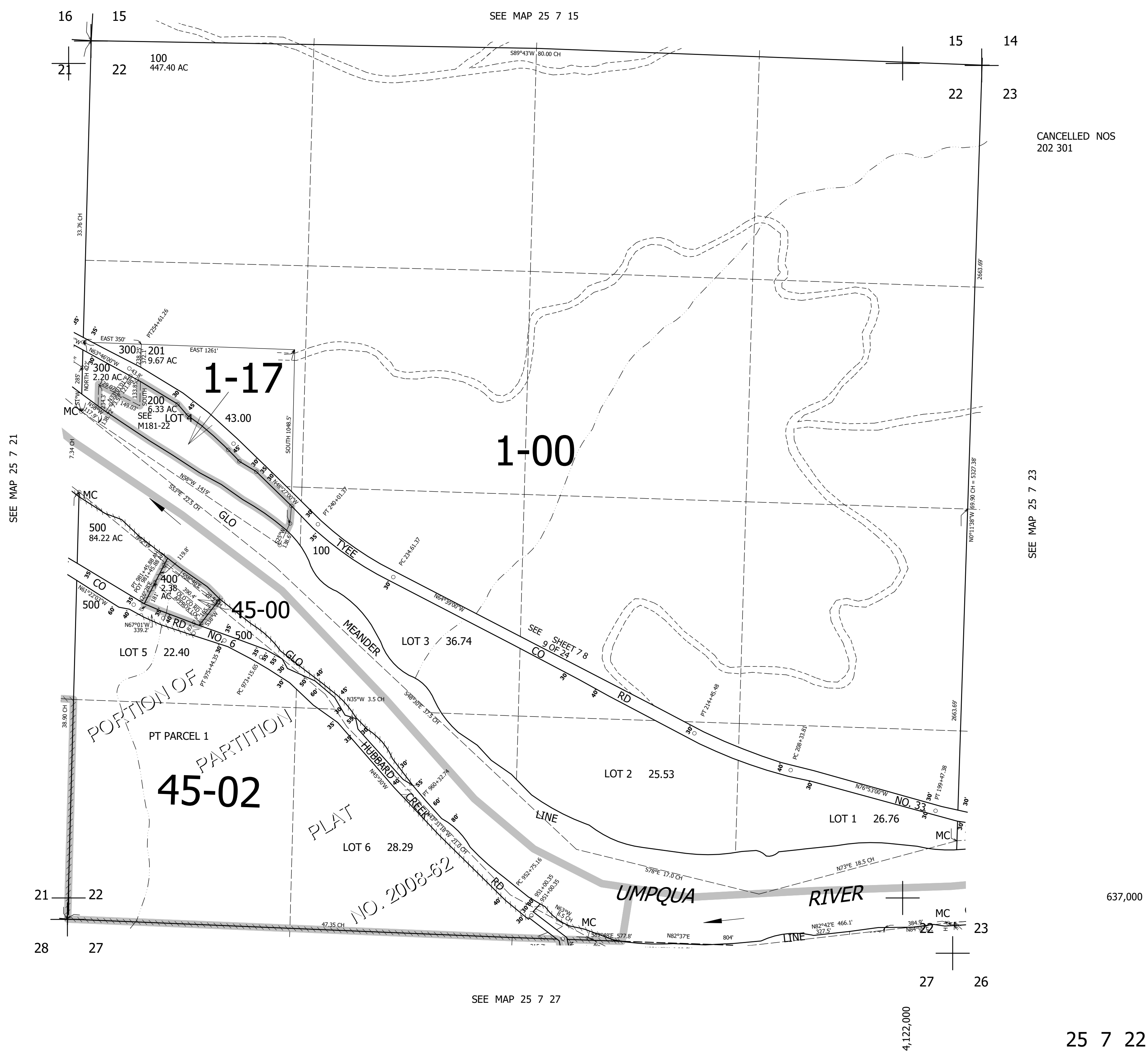


THIS MAP WAS PREPARED FOR ASSESSMENT PURPOSE ONLY.

SEC.22 T.25S. R.7W. W.M.
DOUGLAS COUNTY
1" = 400'

REVISED ON
8-30-22

25 7 22



SEE MAP 25 7 15

CANCELLED NOS
202 301

SEE MAP 25 7 21

SEE MAP 25 7 23

SEE MAP 25 7 27

637,000

4,122,000

25 7 22