

THIS MAP WAS PREPARED FOR ASSESSMENT PURPOSE ONLY.

Upper Left:  
123°31'55"W 43°24'2"N  
4115673E 646505N ft

SE1/4 NE1/4 SEC.16 T.25S. R.07W. W.M.  
DOUGLAS COUNTY  
1" = 100'

Date Exported 2026-03-03

250716AD

CANCELLED NOS:

PARCEL 100  
1. LC=N63°16'17"E 9.7'  
R=1397.4' L=9.7'  
2. N17°16'02"W 61.73'  
3. N15°08'13"W 15.63'  
4. N58°00'53"E 19.88'  
5. N0°39'39"W 27.93'  
6. N0°39'39"W 16.15' M/L  
(TO N. LINE LOT 1  
RASMUSSEN HOLE SUB)

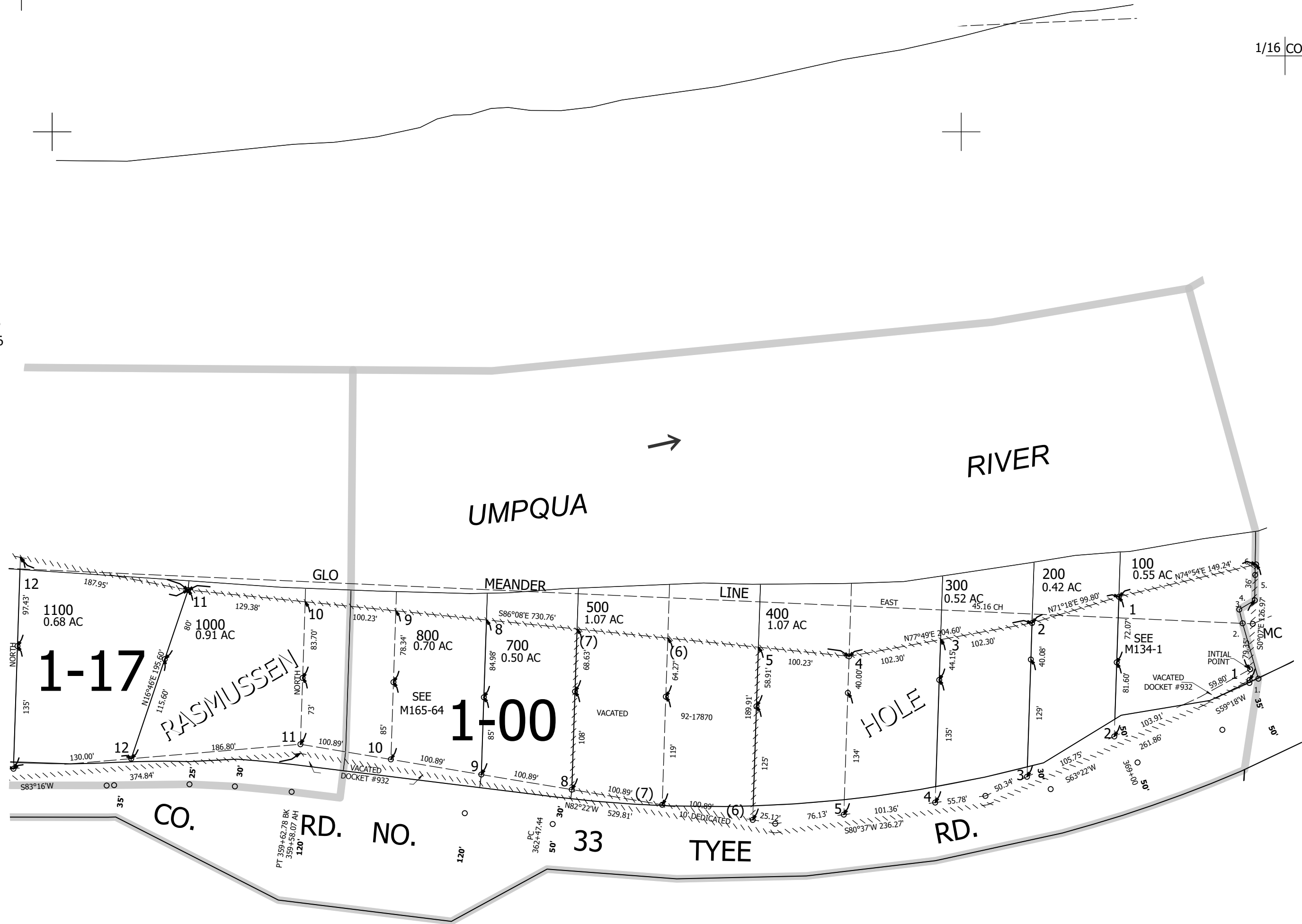
1/16 COR

1/16 COR

SEE MAP  
2507W16

SEE MAP  
2507W16AC

SEE MAP  
2507W15



1/16 COR

1/4 COR

250716AD

Lower Right:  
123°31'28"W 43°23'46"N  
4117645E 644766N ft