

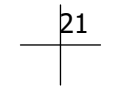
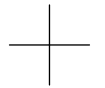
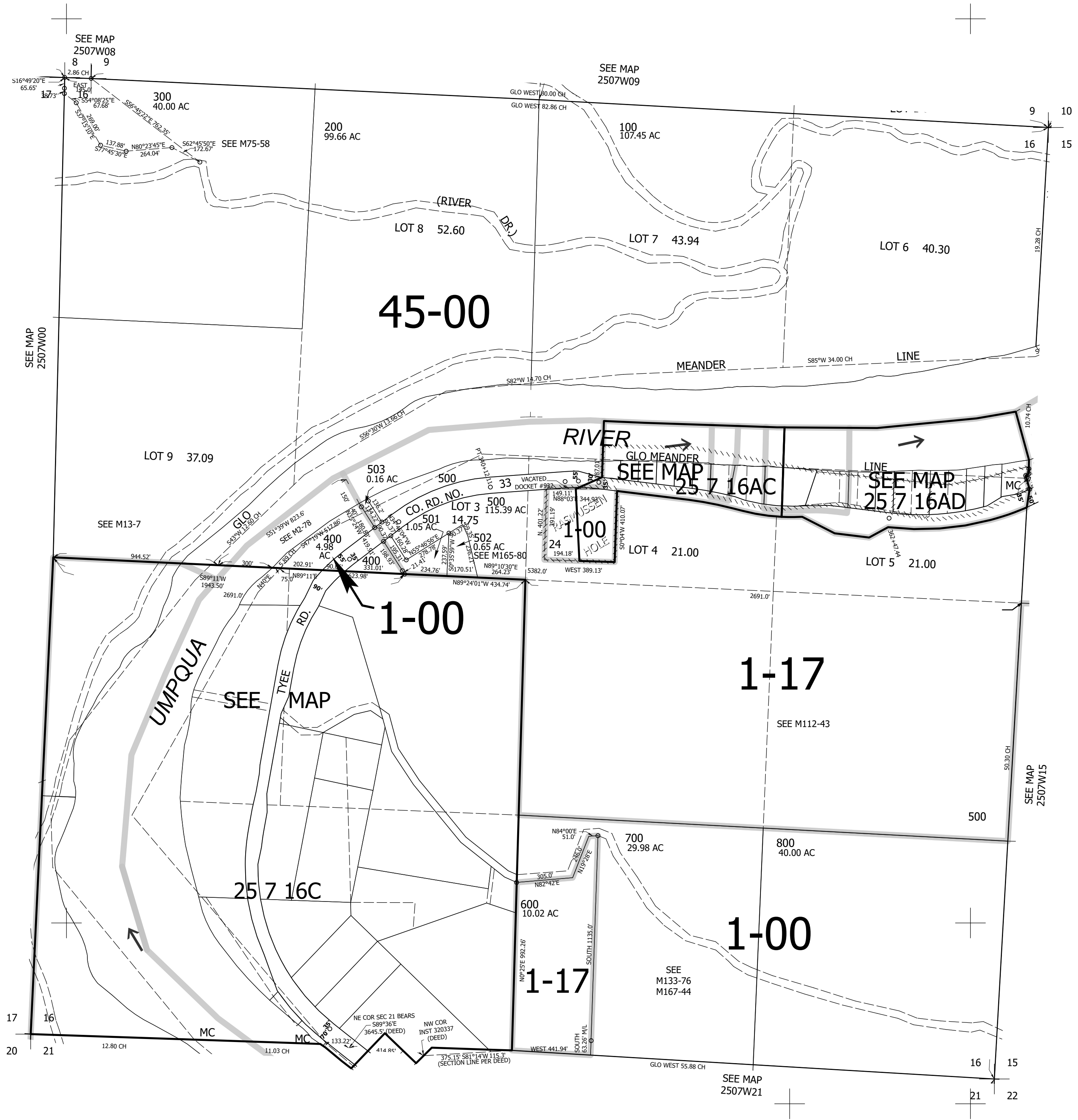
THIS MAP WAS PREPARED FOR ASSESSMENT PURPOSE ONLY.

Upper Left:
123°33'5"W 43°24'19"N
4110613E 648447N ft

SEC.16 T.25S. R.07W. W.M.
DOUGLAS COUNTY
1" = 400'

Date Exported 2026-03-04

CANCELLED NOS:
100M1 200M1 200M2



Lower Right:
123°31'15"W 43°23'14"N
4118462E 641492N ft