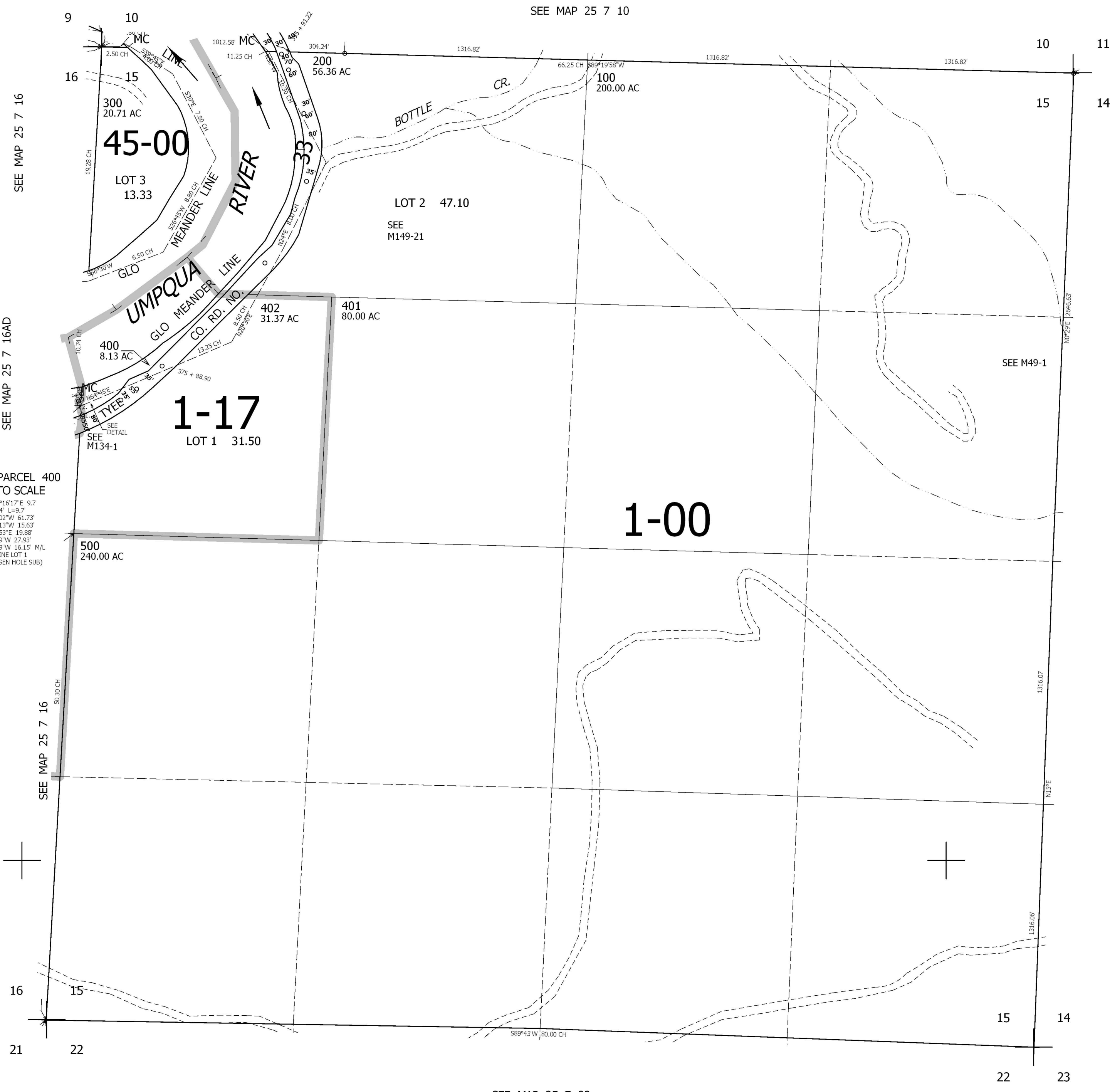


THIS MAP WAS PREPARED FOR ASSESSMENT PURPOSE ONLY.

SEC.15 T.25S. R.7W. W.M.
DOUGLAS COUNTY
1" = 400'

REVISED ON
1-25-06

25 7 15



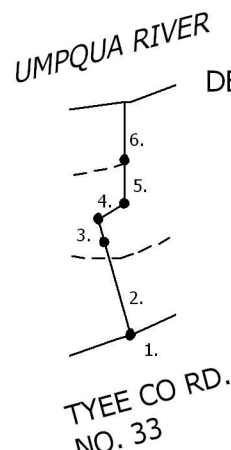
SEE MAP 25 7 16

SEE MAP 25 7 16AD

SEE MAP 25 7 10

CANCELLED NOS
403

SEE MAP 25 7 14



- DETAIL PARCEL 400
NOT TO SCALE
1. LC=N63°16'17"E 9.7
R=1397.4' L=9.7
 2. N17°16'02"W 61.73'
 3. N15°08'13"W 15.63'
 4. N58°00'53"E 19.08'
 5. N0°39'39"W 27.93'
 6. N0°39'39"W 16.15' M/L
(TO N. LINE LOT 1
RASMUSSEN HOLE SUB)

1-00

643,000

SEE MAP 25 7 22

4,122,000

25 7 15