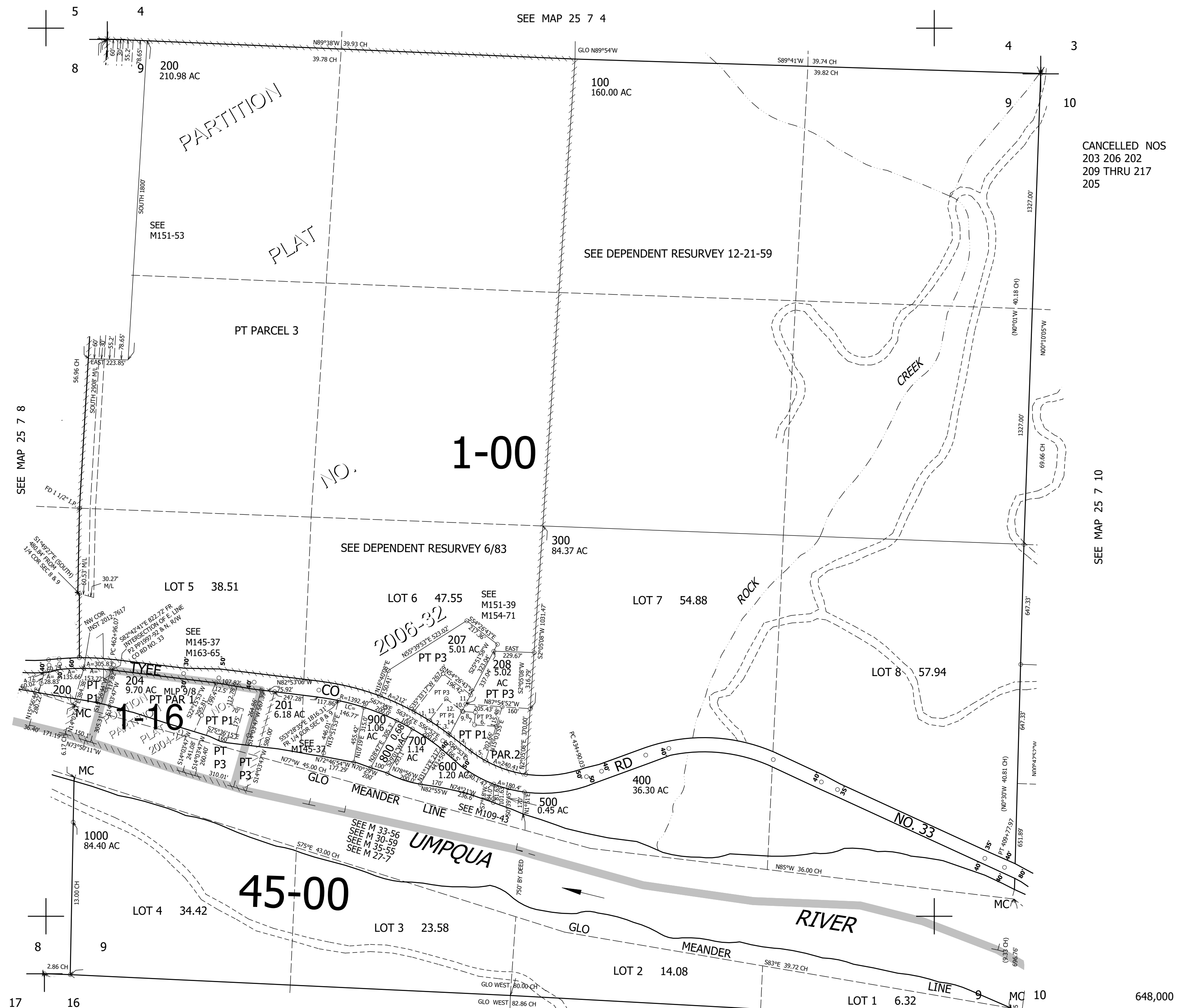


THIS MAP WAS PREPARED FOR ASSESSMENT PURPOSE ONLY.

SEC.9 T.25S. R.7W. W.M. DOUGLAS COUNTY
1" = 400'

REVISED ON 5-26-22

25 7 9



CANCELLED NOS
203 206 202
209 THRU 217
205

- TAXLOTS 207 & 208
- | | |
|------------------------|-------------------------|
| 1. A=100.75' R=1482.4' | 7. N2°05'08"E 70.07' |
| LC=561°20'23"E 100.73' | 8. N87°54'52"W 69.13' |
| 2. A=128 R=1482.4' | 9. N54°26'43"W 5.88' |
| LC=556°55'08"E 128' | 10. N25°51'58"E 42.85' |
| 3. S54°26'43"E 11.26' | 11. N25°51'58"E 58.6' |
| 4. S54°26'43"E 150.28' | 12. N54°26'43"W 113.5' |
| A=100' R=666.2' | 13. S35°33'17"W 155.5' |
| LC=558°44'44"E 99.91' | 14. N25°51'58"E 152.14' |
| 6. N87°54'52"W 122.73' | |

SEE MAP 25 7 16

25 7 9

648,000