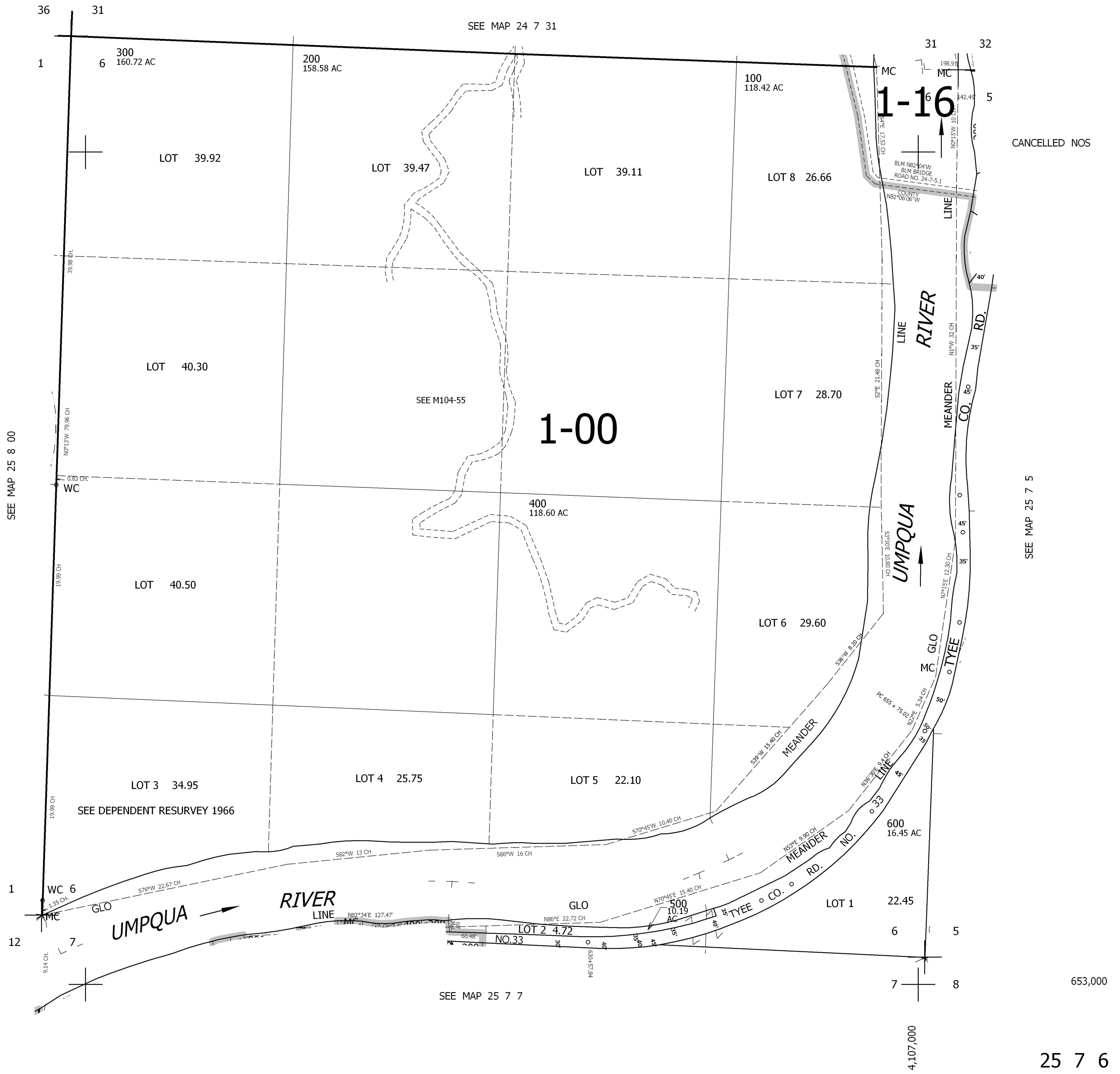


THIS MAP WAS PREPARED FOR ASSESSMENT PURPOSE ONLY.

SEC.6 T.25S. R.7W. W.M.
DOUGLAS COUNTY
1" = 400'

REVISED ON
2-18-99

25 7 6



CANCELLED NOS

SEE MAP 25 7 5

653,000

25 7 6