

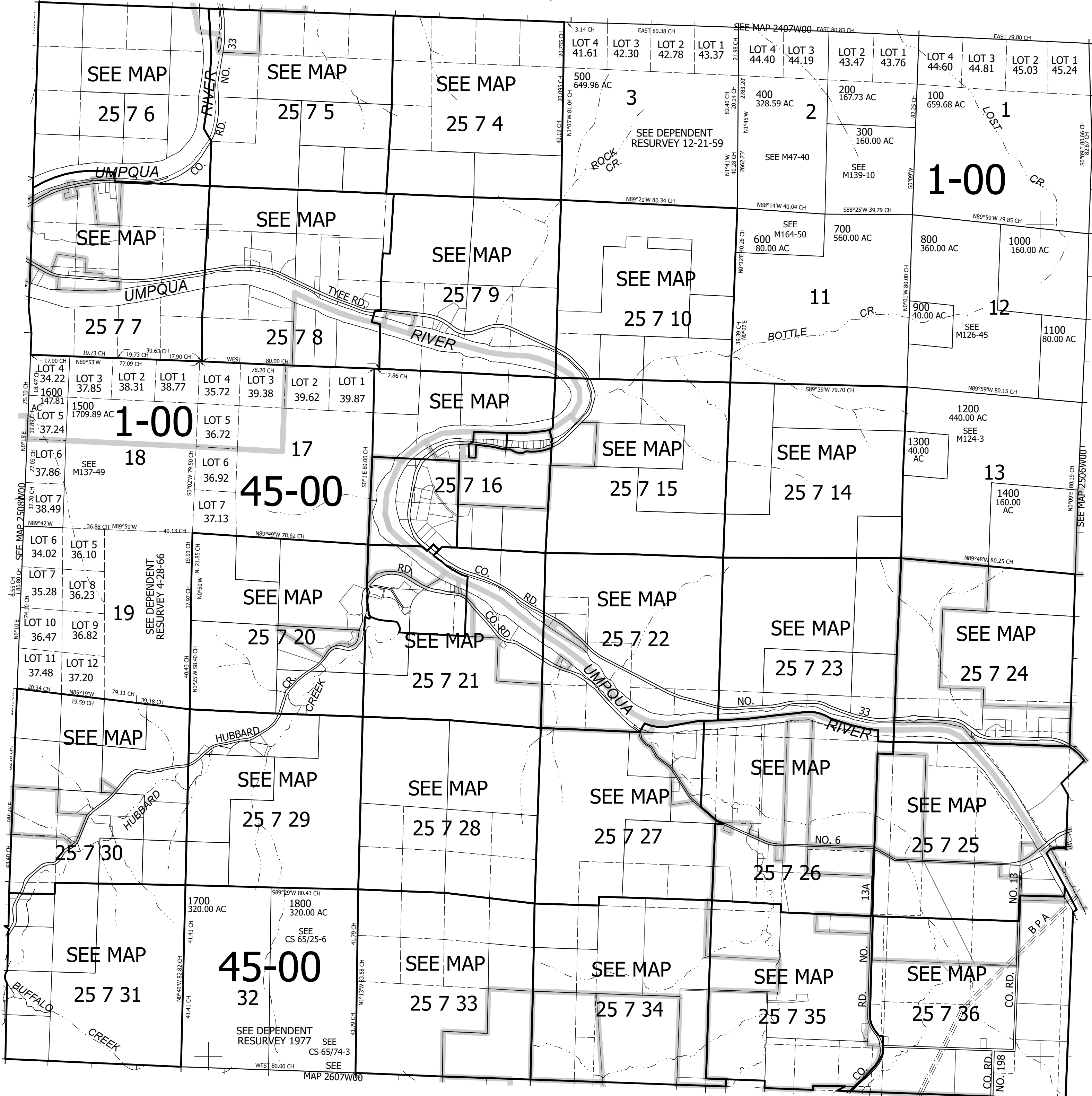
THIS MAP WAS PREPARED FOR ASSESSMENT PURPOSE ONLY.

Upper Left:  
123°36'6"W 43°26'5"N  
4097636E 659574N ft

T.25S. R.07W. W.M.  
DOUGLAS COUNTY  
1" = 2,000'

Date Exported 2025-02-03

CANCELLED NOS:  
1100M1



Lower Right:  
123°26'58"W 43°20'35"N  
4136882E 624798N ft