

THIS MAP WAS PREPARED FOR
ASSESSMENT PURPOSE ONLY.

SW1/4 SW1/4 SEC.36 T.25S. R.6W. W.M.
DOUGLAS COUNTY
1" = 100'

REVISED ON
1-11-21

25 6 36CC

1/16 COR

1/16 COR

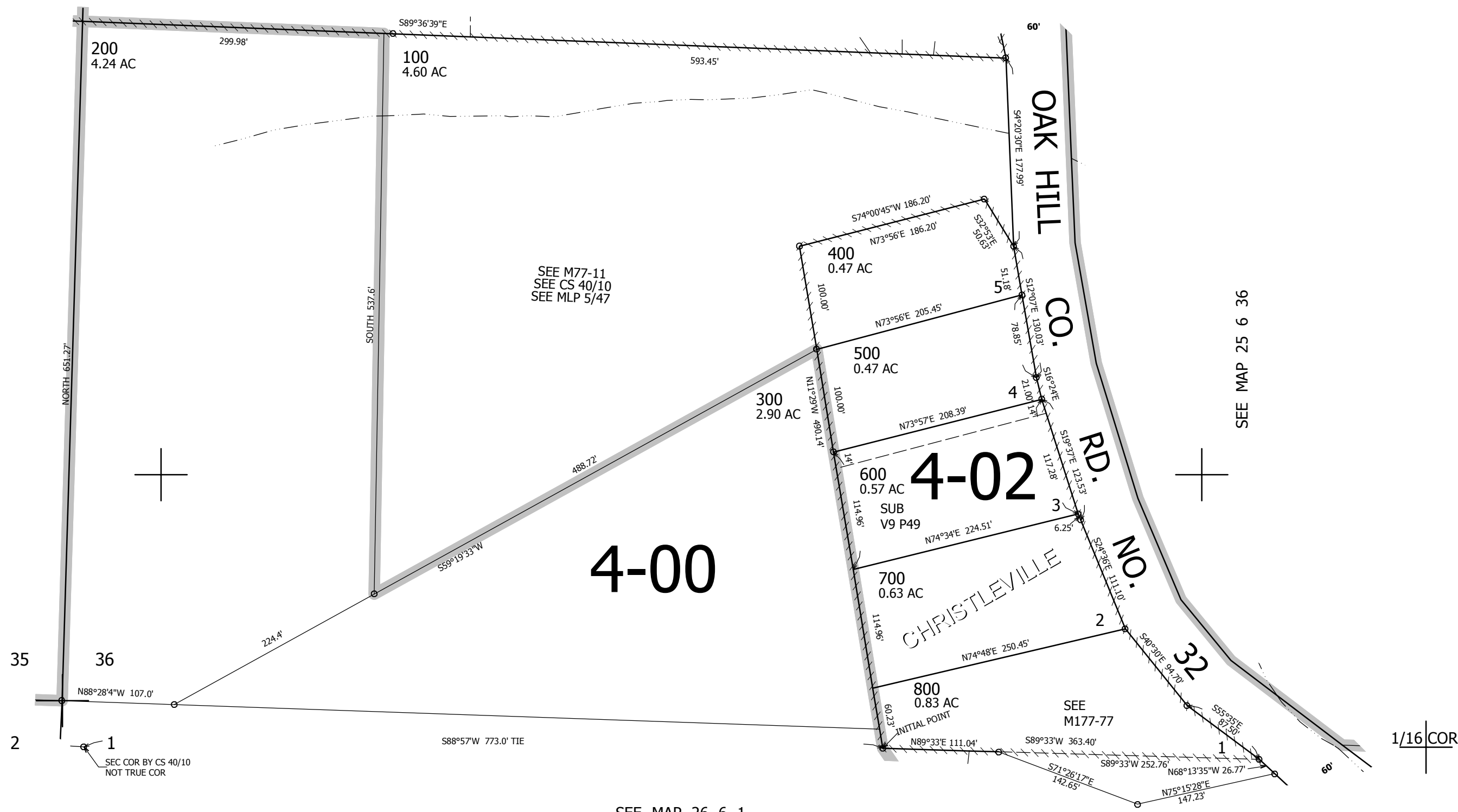
CANCELLED NOS

SEE MAP 25 6 36

SEE MAP 25 6 35

SEE MAP 25 6 36

625,000



SEE MAP 26 6 1

4,160,000

25 6 36CC