

THIS MAP WAS PREPARED FOR ASSESSMENT PURPOSE ONLY.

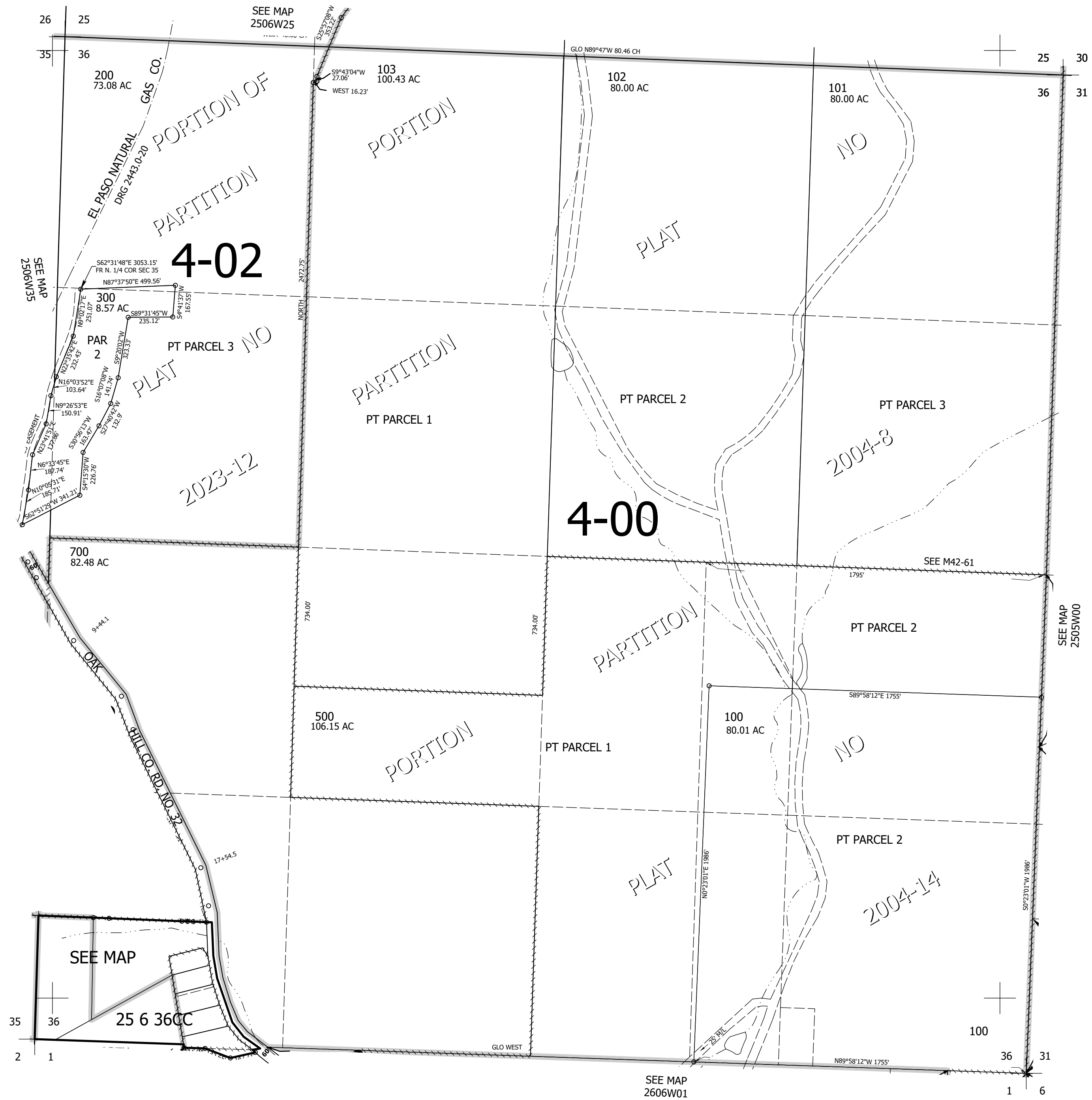
Upper Left:  
123°22'19"W 43°21'43"N  
4157664E 630890N ft

SEC.36 T.25S. R.06W. W.M.  
DOUGLAS COUNTY  
1" = 400'

Date Exported 2026-04-07

250636  
& INDEX

CANCELLED NOS:  
201 400 501  
600 601 502  
800 301 104



SEE MAP

SEE MAP  
2606W01

SEE MAP  
2505W00

25 6 36CC

250636  
& INDEX

Lower Right:  
123°20'30"W 43°20'37"N  
4165513E 623935N ft