

THIS MAP WAS PREPARED FOR ASSESSMENT PURPOSE ONLY.

Upper Left:
123°23'24"W 43°21'42"N
4152898E 630980N ft

SEC.35 T.25S. R.06W. W.M.
DOUGLAS COUNTY
1" = 400'

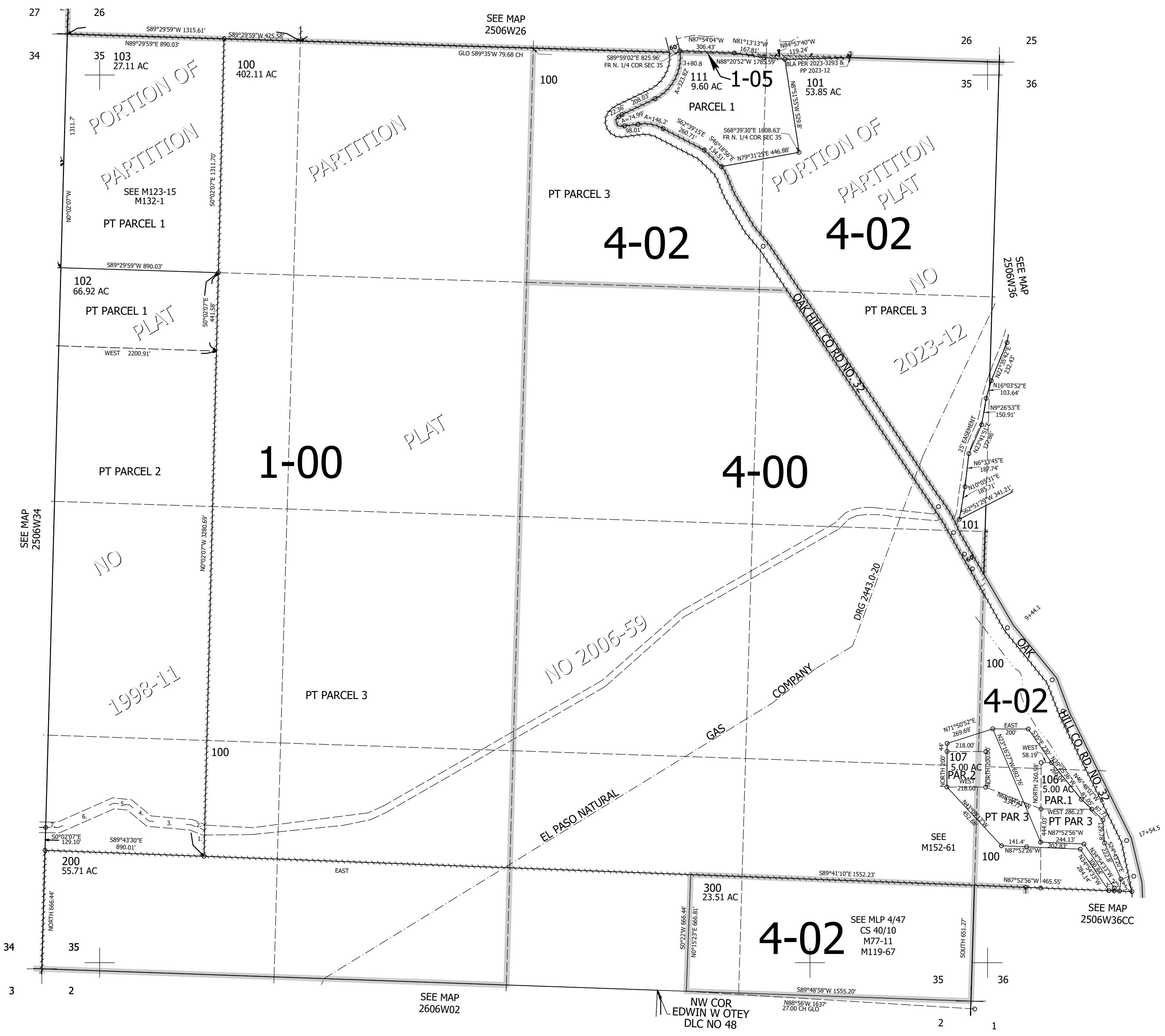
Date Exported 2024-02-08

250635

CANCELLED NOS:
104 105 108
109 110 112
113

- P.P. 2006-59
1. N87°52'56"W 30'
 2. NORTH 16.88'
 3. N87°52'56"W 30'
 4. S6°13'05"W 69.11'
 5. N87°52'56"W 68.15'

- P. P. 1998-11
1. N0°02'07"E 149.35'
 2. N70°34'01"W 76.65'
 3. N86°47'06"W 237.55'
 4. N52°21'17"W 142.96'
 5. N85°50'15"W 89.98'
 6. S64°19'36"W 338.52'
 7. S88°25'39"W 72.52'



250635

Lower Right:
123°21'35"W 43°20'36"N
4160747E 624024N ft