

THIS MAP WAS PREPARED FOR ASSESSMENT PURPOSE ONLY.

Upper Left:
123°27'2"W 43°21'43"N
4136806E 631636N ft

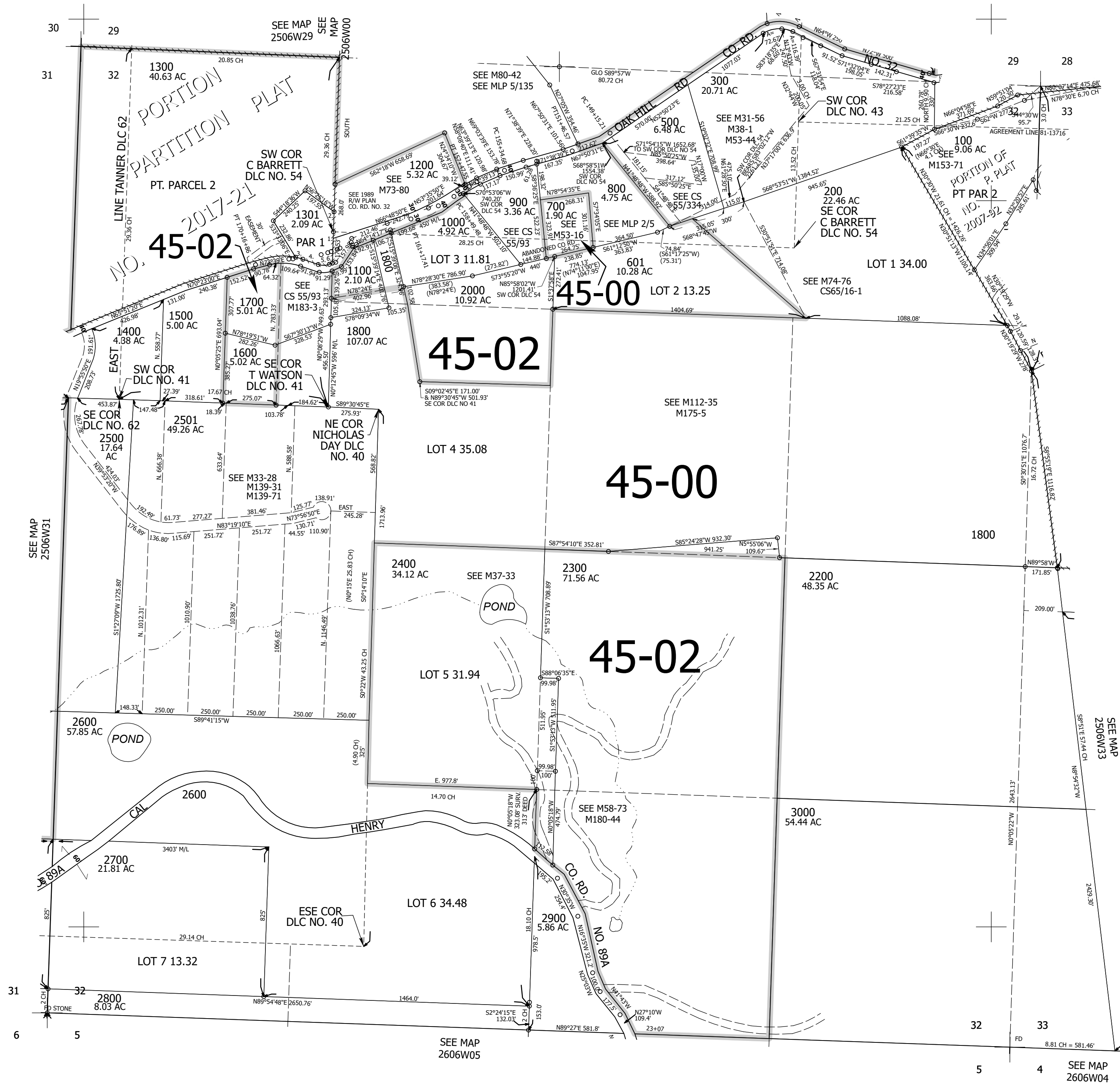
SEC.32 T.25S. R.06W. W.M.
DOUGLAS COUNTY
1" = 400'

Date Exported 2024-02-05

250632

- PARCEL 1301
1. N00°12'45"W 172.66'
 2. N00°12'45"W 110.57'
 3. A=40.73' R=338.31'
LC=S76°21'45"E
 4. S72°48'14"E 91.78'
 5. A=63.25' R=90.18'
LC=S86°47'20"E
 6. N66°41'46"E 17.05'

- CANCELLED NOS:
- 600 400 700M1
 - 2800M1 601M1 2100M1
 - 2800M1 101 102
 - 103 2301 2101
 - 1101 1900 1901
 - 2100 1601 1701



250632

Lower Right:
123°25'13"W 43°20'37"N
4144655E 624680N ft