

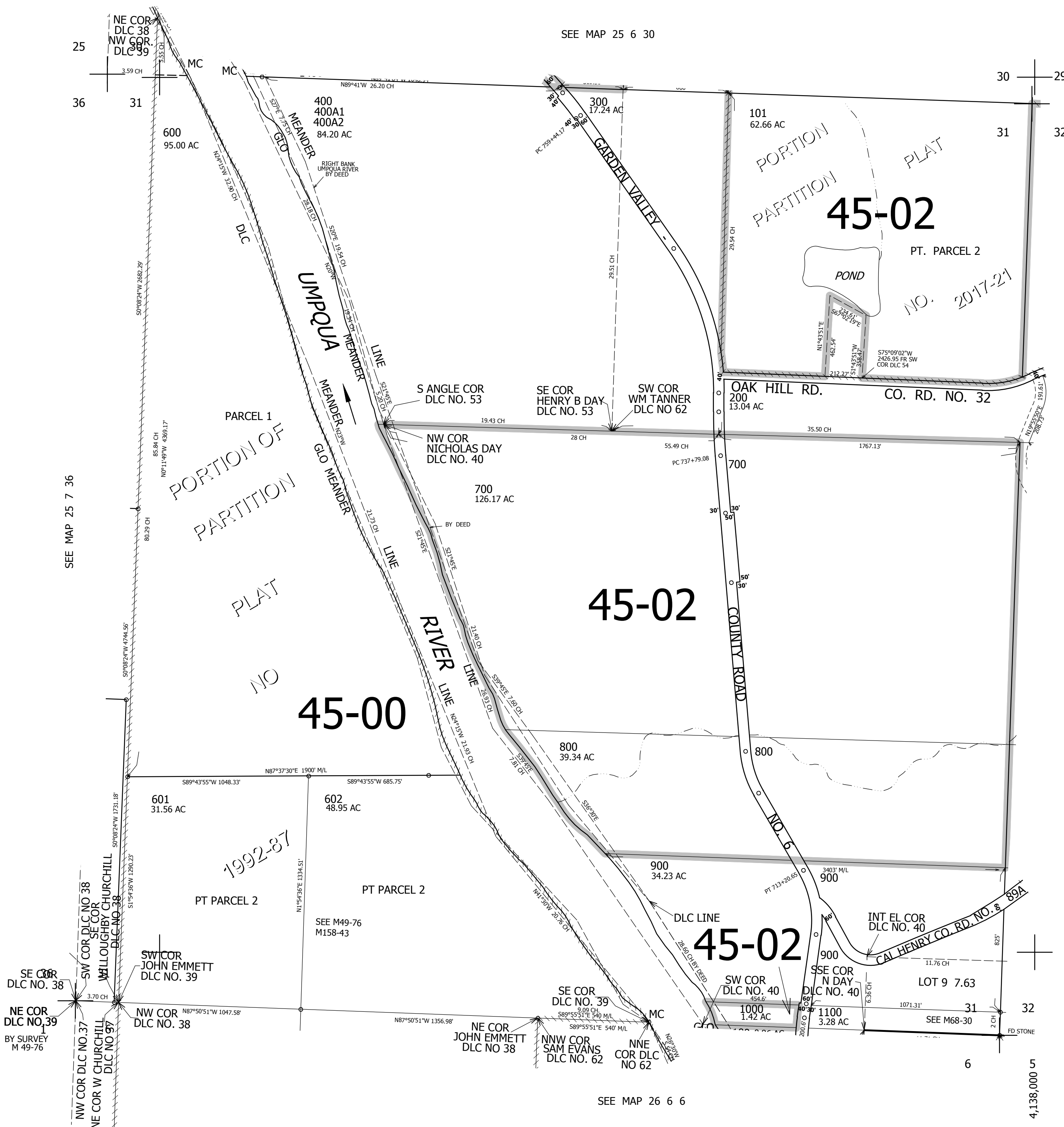
THIS MAP WAS PREPARED FOR ASSESSMENT PURPOSE ONLY.

SEC.31 T.25S. R.6W. W.M.
DOUGLAS COUNTY

1" = 400'

REVISED ON
11-30-17

25 6 31



CANCELLED NOS
1100M1 501 500
502 503 100

SEE MAP 25 6 32

626,000

SEE MAP 26 6 6

25 6 31

4,138,000 5