

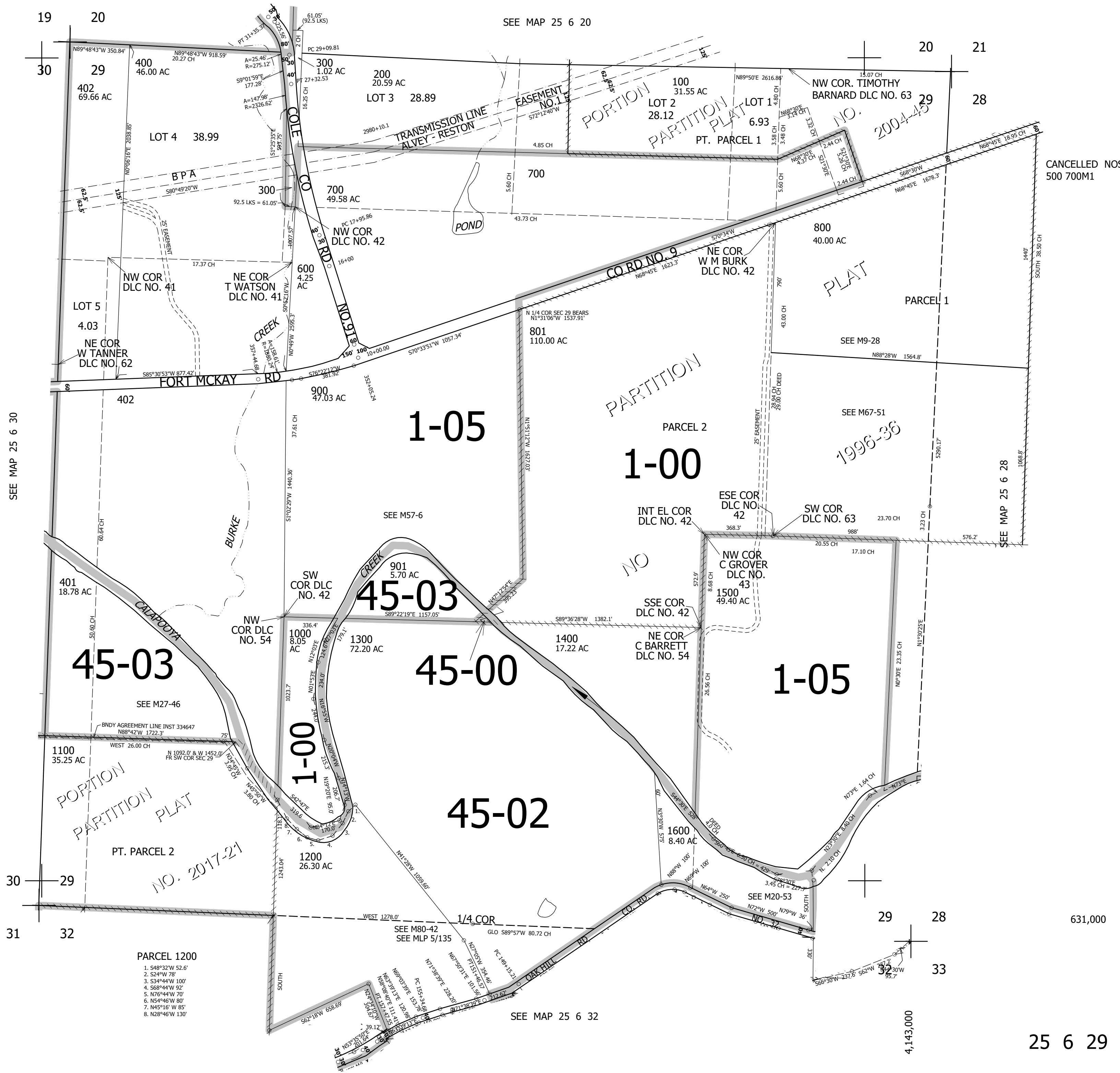
THIS MAP WAS PREPARED FOR ASSESSMENT PURPOSE ONLY.

SEC.29 T.25S. R.6W. W.M. DOUGLAS COUNTY

REVISED ON 8-21-18

25 6 29

1" = 400'



SEE MAP 25 6 30

SEE MAP 25 6 20

SEE MAP 25 6 28

SEE MAP 25 6 32

CANCELLED NOS 500 700M1

631,000

4,143,000

25 6 29

- PARCEL 1200
1. S48°32'W 52.6'
 2. S24°W 78'
 3. S34°44'W 100'
 4. S68°44'W 92'
 5. N76°44'W 70'
 6. N54°46'W 80'
 7. N45°16' W 85'
 8. N28°46'W 130'

1996-36

2004-45

NO. 2017-21

NO. 32

SEE M20-53

1-05

1-00

45-03

45-03

45-00

45-02

1-05

30

31

29

32

20

30

20

21

29

28

29

28

33

32

30

31