

THIS MAP WAS PREPARED FOR ASSESSMENT PURPOSE ONLY.

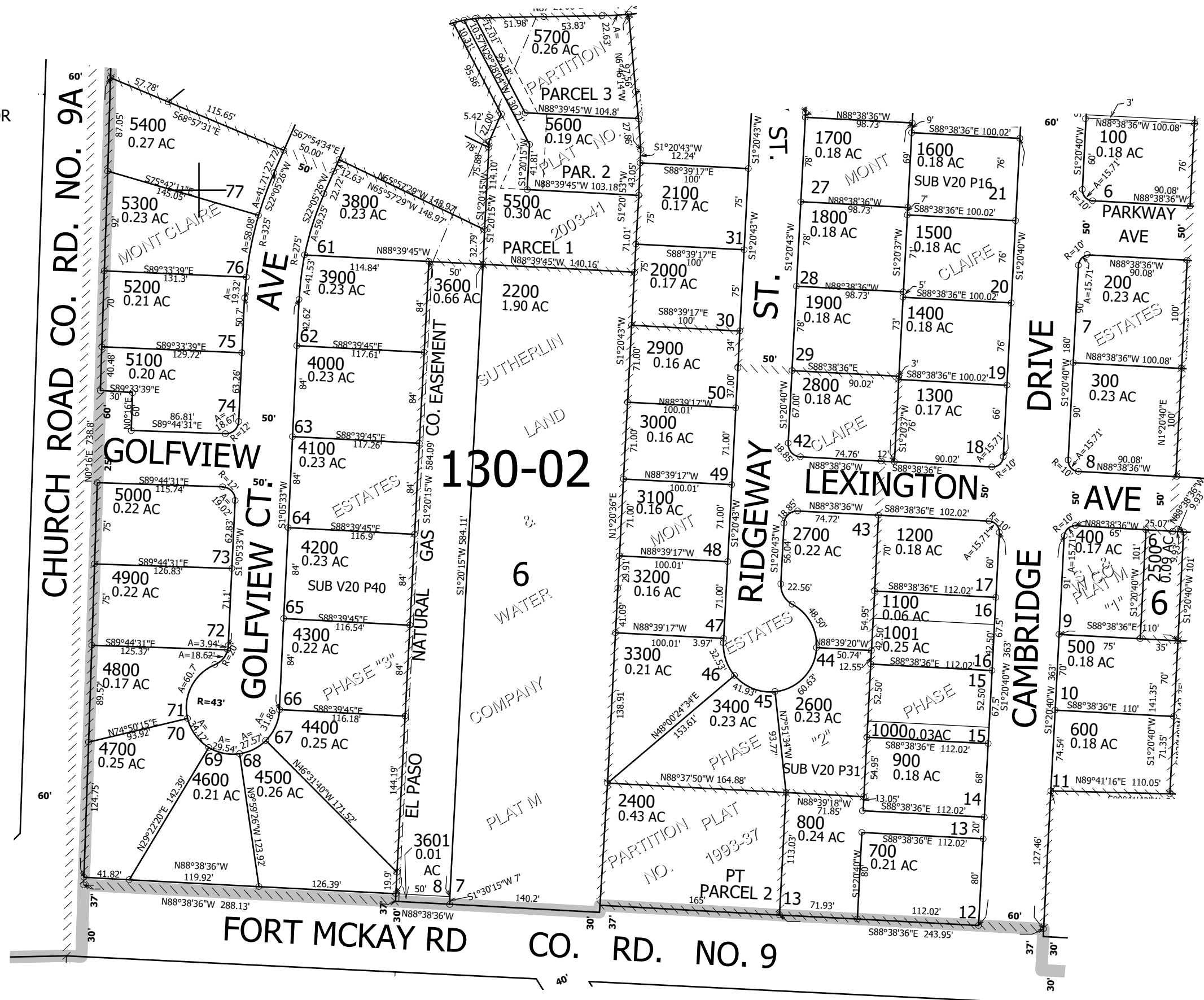
NE1/4 NW1/4 SEC.24 T.25S. R.6W. W.M.
DOUGLAS COUNTY

REVISED ON
7-7-22

25 6 24BA
SUTHERLIN

1" = 100'

SEE MAP 25 6 13CD



SEE MAP 25 6 24

SEE MAP 25 6 24

SEE MAP 25 6 24A

SEE MAP 25 6 13CD

SEE MAP 25 6 24AB

CANCELLED NOS
199 1799 2300
2401 1101 3500
3700

639,500

25 6 24BA
SUTHERLIN

1/16 COR

4,162,000

1/16 COR