

THIS MAP WAS PREPARED FOR ASSESSMENT PURPOSE ONLY.

Upper Left:  
123°21'15"W 43°23'13"N  
4162724E 639875N ft

SW1/4 NE1/4 SEC.24 T.25S. R.06W. W.M.  
DOUGLAS COUNTY  
1" = 100'

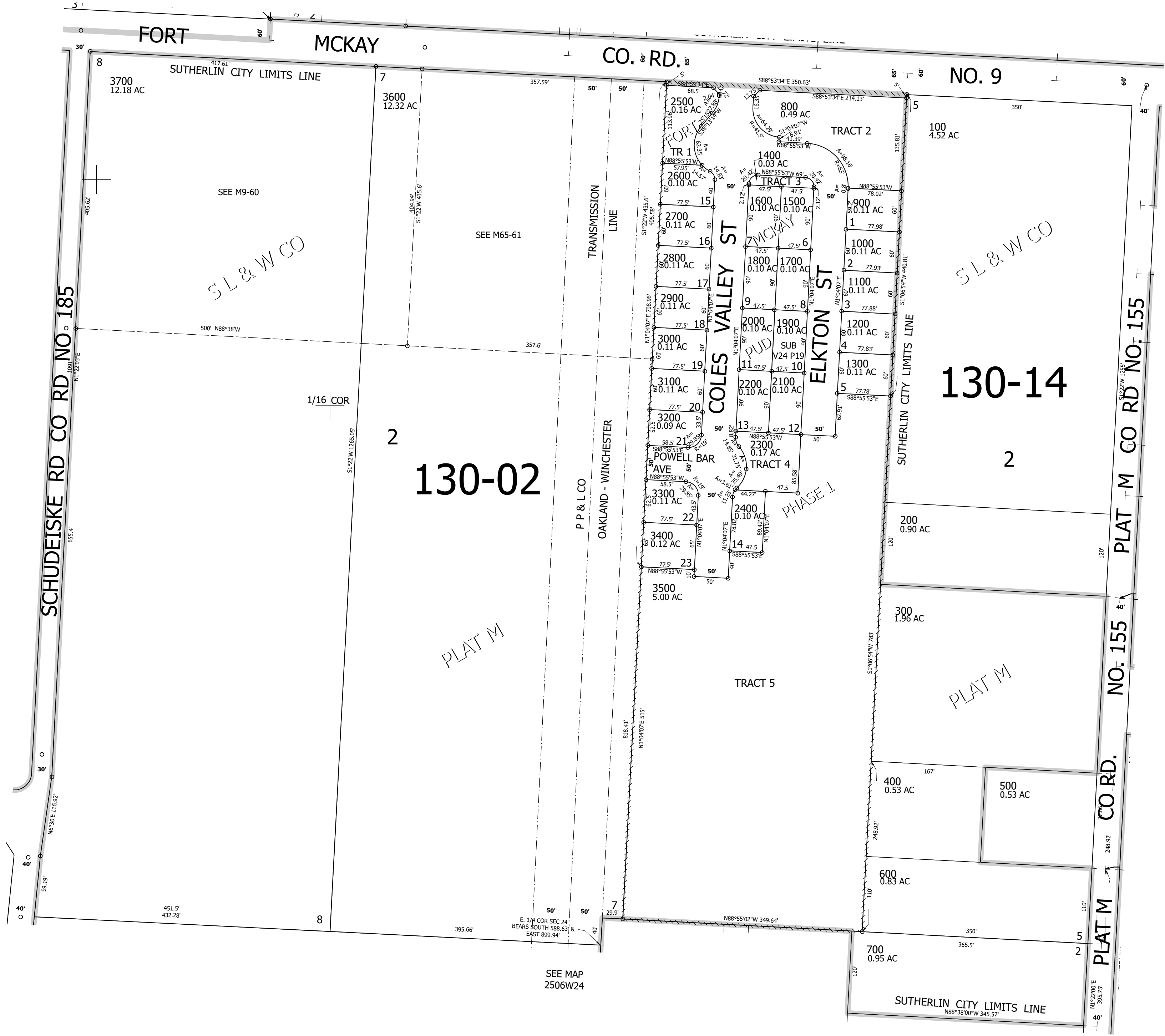
Date Exported 2023-09-06

250624AD  
Sutherland

CANCELLED NOS:

SEE MAP  
2506W24AB

SEE MAP  
2506W24A



SEE MAP  
2506W24A

SEE MAP  
2505W19B

SEE MAP  
2505W19BC

250624AD  
Sutherland

Lower Right:  
123°20'48"W 43°22'57"N  
4164686E 638136N ft