

THIS MAP WAS PREPARED FOR ASSESSMENT PURPOSE ONLY.

NW1/4NE1/4 SEC.24 T.25S. R.6W. W.M. DOUGLAS COUNTY

1" = 100'

REVISED ON
7-7-22

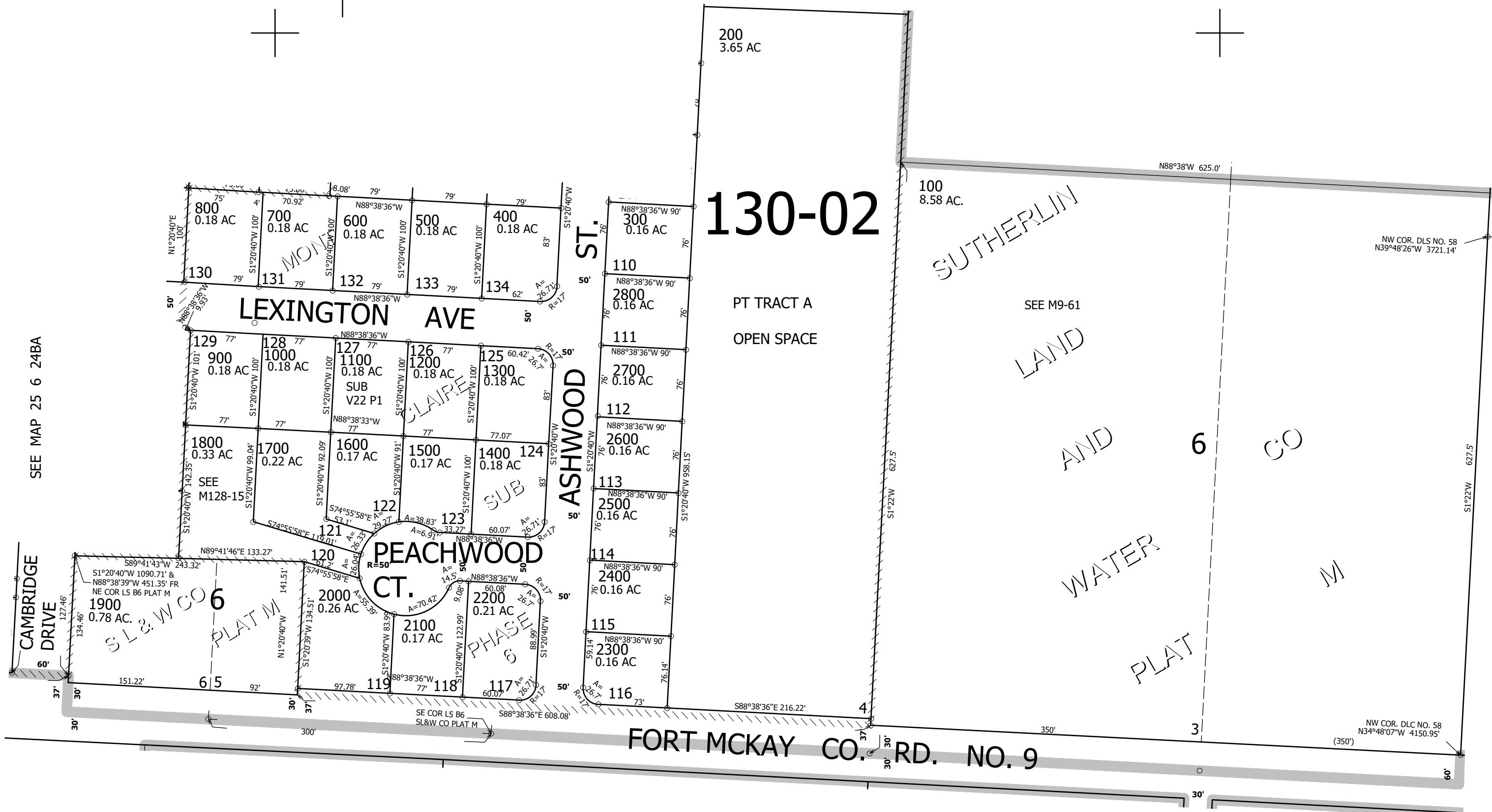
25 6 24AB SUTHERLIN

SEE MAP 25 6 13DC

1/4 COR

1/16 COR

CANCELLED NOS



SEE MAP 25 6 24BA

SEE M9-61

SEE MAP 25 6 24A

FORT MCKAY CO. RD. NO. 9

SEE MAP 25 6 24A

1/16 COR

1/16 COR

639,500

4,163,000

25 6 24AB SUTHERLIN