

THIS MAP WAS PREPARED FOR ASSESSMENT PURPOSE ONLY.

Upper Left:
123°22'23"W 43°23'28"N
4157747E 641560N ft

SEC.24 T.25S. R.06W. W.M.
DOUGLAS COUNTY
1" = 400'

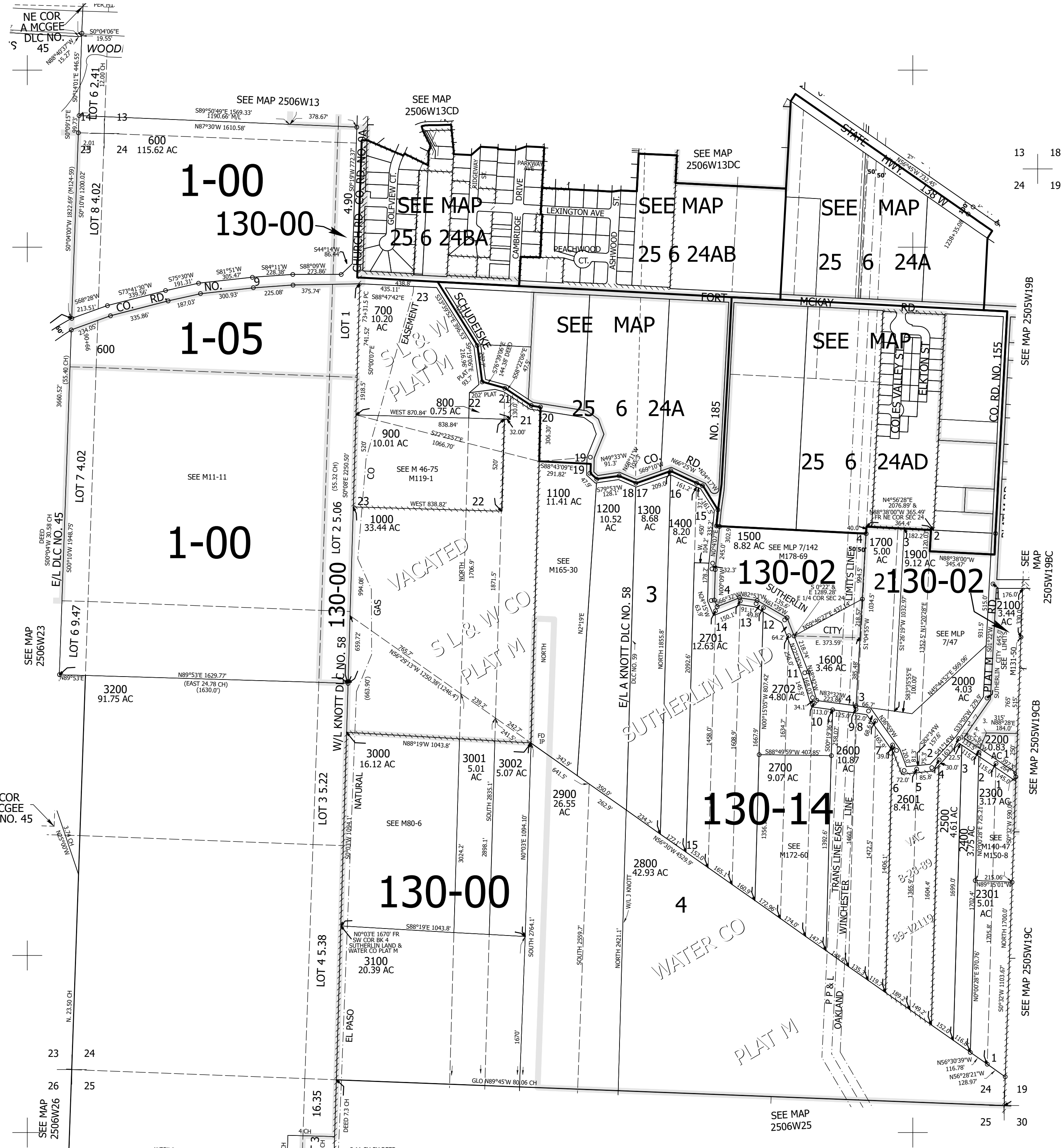
Date Exported 2025-05-29

250624
& INDEX
Sutherland

CANCELLED NOS:
400A1 102 500
200 101 100
300 502 400
503 501 1101
1800 1501

- PARCEL 101
1. S1°20'43"W 245.46'
 2. N89°08'45"W 60'
 3. S1°20'43"W 103.6'
 4. N87°21'06"E 14.47'
 5. LC=N85°11'24"E 20.75'
R=275' L=20.75'
 6. S6°57'17"E 50'
 7. S6°46'14"E 125.42'
 8. S1°20'43"W 162.24'
 9. S88°39'17"E 100'
 10. S1°20'43"W 34'
 11. S88°38'36"E 50'
 12. S88°38'36"E 98.74'
 13. S1°20'40"W 79'
 14. N88°38'36"W 12'
 15. S1°20'40"W 50'
 16. S1°20'40"W 259.95'
 17. N88°39'18"W 71.85'
 18. S1°23'10"W 113.03'
 19. S1°20'40"W 299'
 20. S1°05'32"E 59.48'
 21. S63°29'29"W 107.08'
 22. S59°28'11"W 61.56'
 23. S72°52'24"W 83'
 24. S1°23'31"W 128.48'

- PARCEL 2100
1. N33°05'E 33.6'(33.4')
 2. N33°05'E 131'
 3. S29°38'E 122.21'
 4. S88°28'W 132'
 5. N88°28'E 131'
 6. S19°48'W 111.17'



SE COR
A MCGEE
DLC NO. 45

SEE MAP
2506W26

WEST 22.13 CH (22.72 CH)
S/L DURLAND PROPERTY
20.00 CH WEST

LOT 3
16.35
DEED 73 CH

130-00

130-14

130-02

1-00
130-00

1-05

1-00

VACATED
S L & W CO
PLAT M

SUTHERLIN LAND

WATER CO
PLAT M

13 18
24 19

SEE MAP 2505W19B

SEE MAP 2505W19C

SEE MAP 2505W19C

SEE MAP 2505W19C

SEE MAP
2506W25

Lower Right:
123°20'34"W 43°22'22"N
4165596E 634604N ft

250624
& INDEX
Sutherland