

THIS MAP WAS PREPARED FOR ASSESSMENT PURPOSE ONLY.

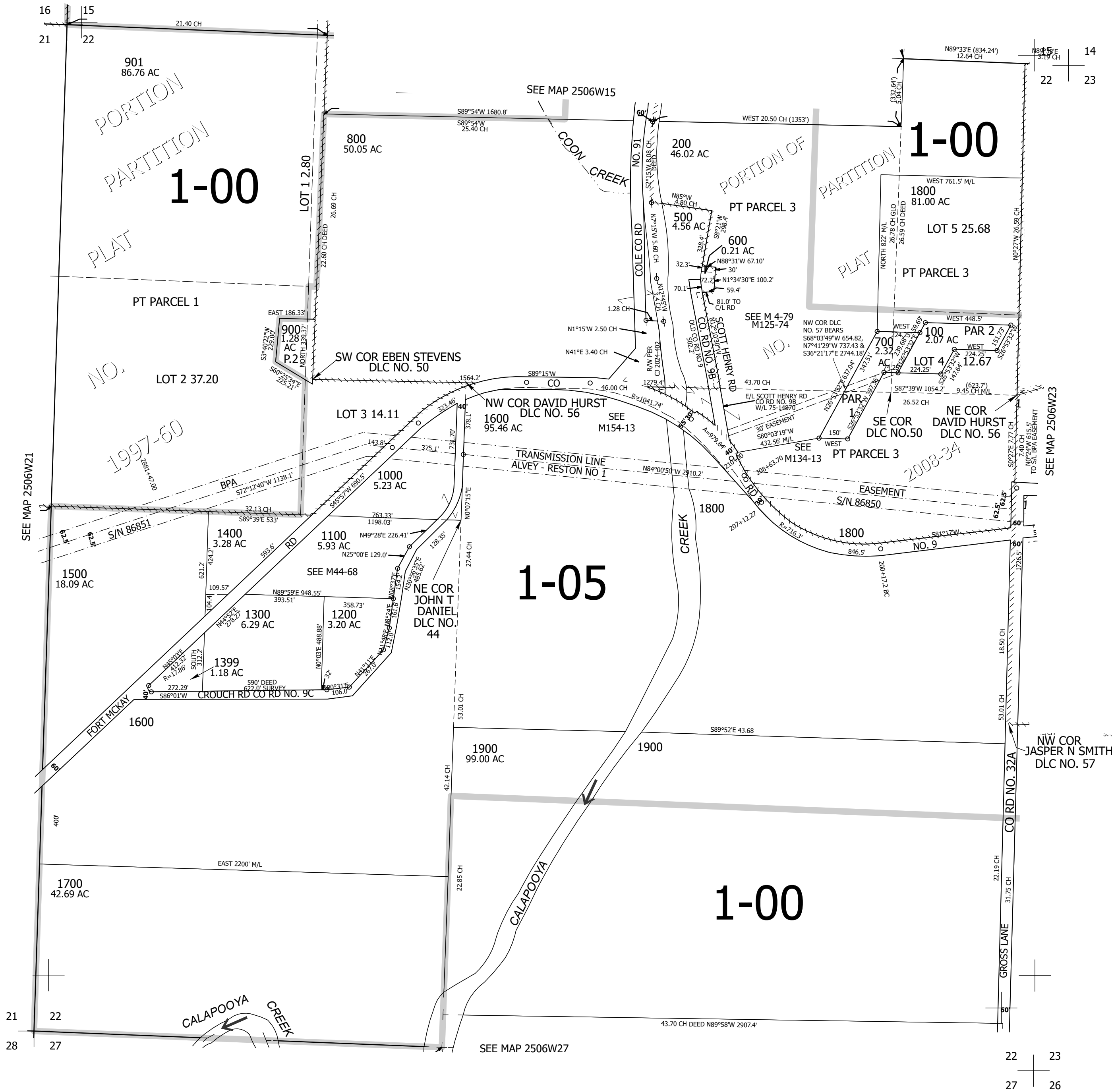
Upper Left:
123°24'40"W 43°23'27"N
4147670E 641849N ft

SEC.22 T.25S. R.06W. W.M.
DOUGLAS COUNTY
1" = 400'

Date Exported 2024-04-24

250622

CANCELLED NOS:
500M1 101 102
201 300 701
202 1801 203
400



250622

Lower Right:
123°22'50"W 43°22'21"N
4155519E 634894N ft