

THIS MAP WAS PREPARED FOR ASSESSMENT PURPOSE ONLY.

SW1/4 SE1/4 SEC.13 T.25S. R.6W. W.M.
DOUGLAS COUNTY

REVISED ON
7-1-22

25 6 13DC
SUTHERLIN

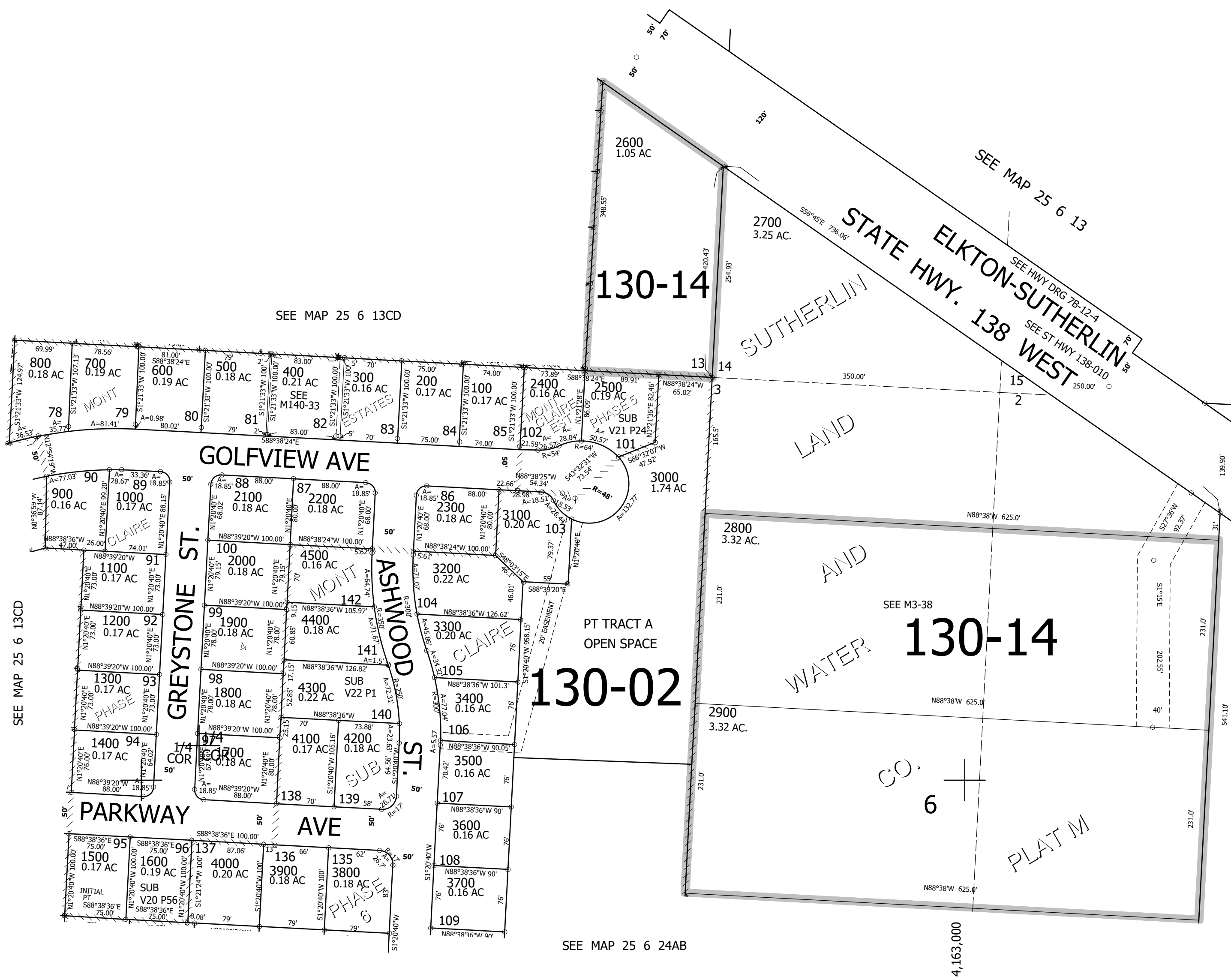
1/16
COR

1" = 100'

1/16
COR

CANCELLED NOS
301 501

641,500



SEE MAP 25 6 13CD

SEE MAP 25 6 24AB

SEE MAP 25 6 24A

1/16
COR

25 6 13DC
SUTHERLIN