

THIS MAP WAS PREPARED FOR ASSESSMENT PURPOSE ONLY.

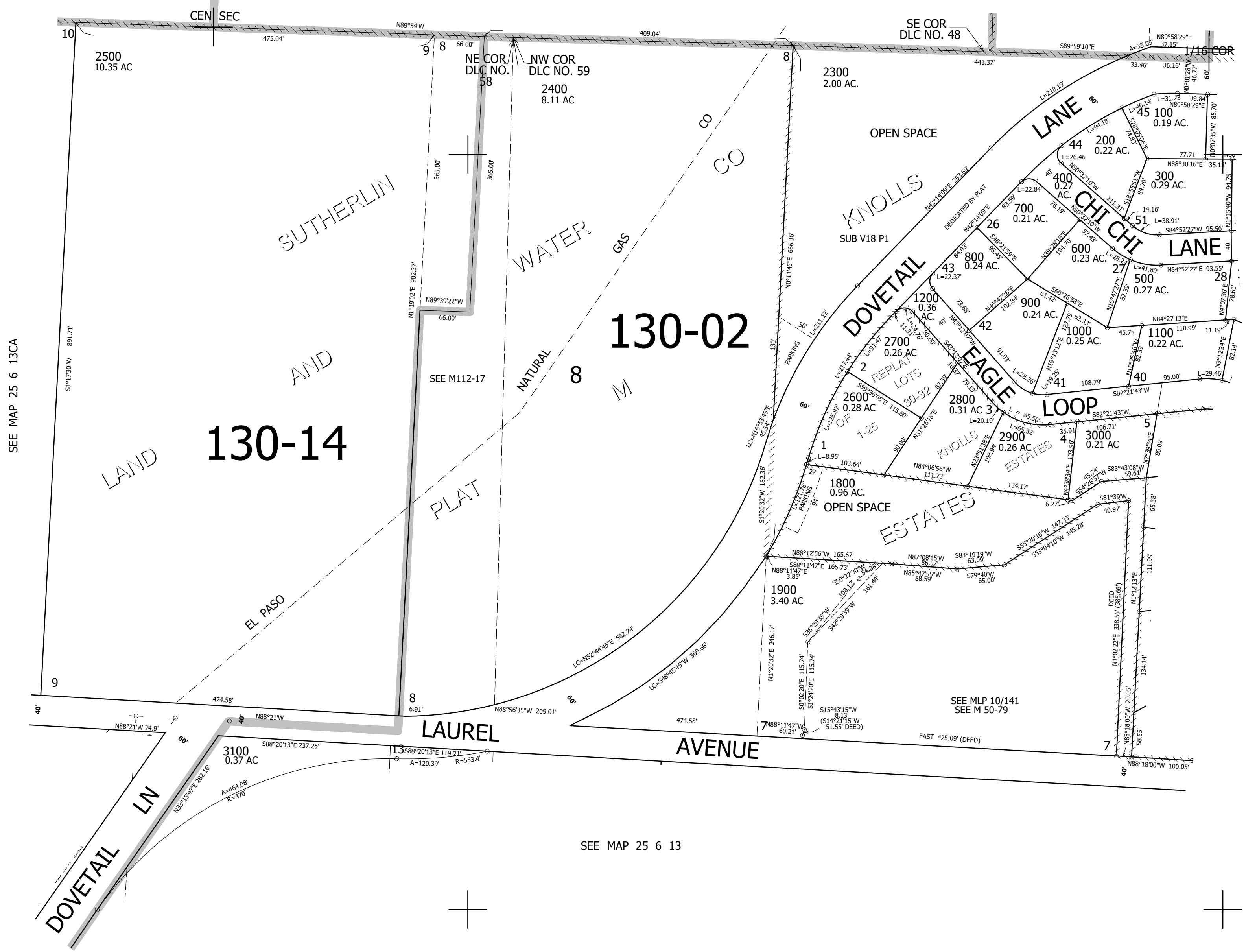
NW1/4 SE1/4 SEC.13 T.25S. R.6W. W.M.
DOUGLAS COUNTY
1" = 100'

REVISED ON
7-1-22

25 6 13DB
SUTHERLIN

SEE MAP 25 6 13

CANCELLED NOS
2000 2100 1300
1400 1500 1600
1700 2200



SEE MAP 25 6 13DA

SEE MAP 25 6 13

642,000

1/16 COR

1/16 COR

4,162,500

25 6 13DB
SUTHERLIN