

THIS MAP WAS PREPARED FOR ASSESSMENT PURPOSE ONLY.

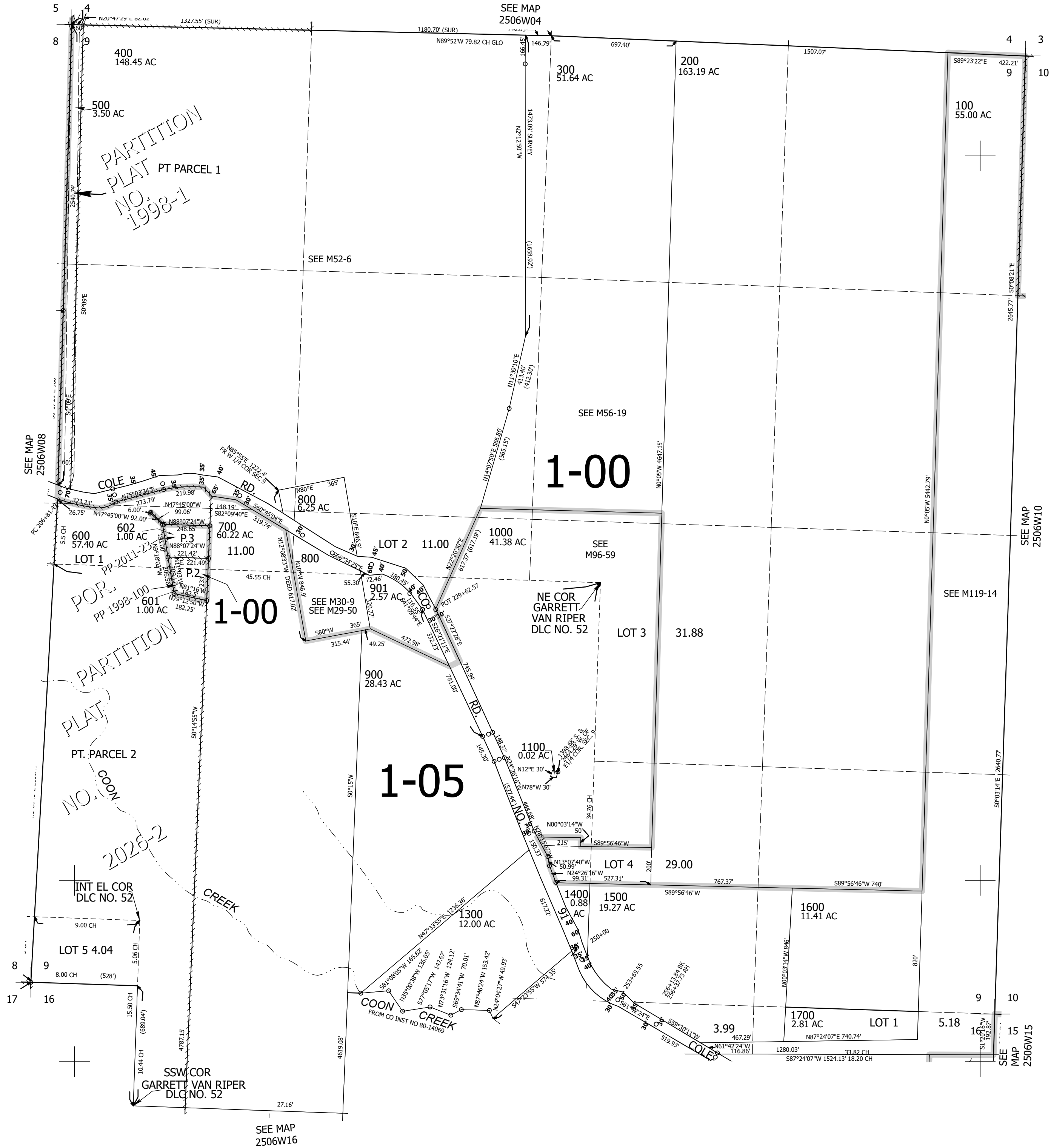
Upper Left:
123°25'54"W 43°25'8"N
4142569E 652218N ft

SEC.09 T.25S. R.06W. W.M.
DOUGLAS COUNTY
1" = 400'

Date Exported 2026-02-11

250609

CANCELLED NOS:
1200 700M1 100M1
1600M1 200M1 1700M1
600M1 300M1 400M1
601M1 900M1 901M1
500M1



250609

Lower Right:
123°24'4"W 43°24'2"N
4150418E 645263N ft