

THIS MAP WAS PREPARED FOR ASSESSMENT PURPOSE ONLY.

Upper Left:
123°24'42"W 43°26'1"N
4148052E 657418N ft

SEC.03 T.25S. R.06W. W.M.
DOUGLAS COUNTY
1" = 400'

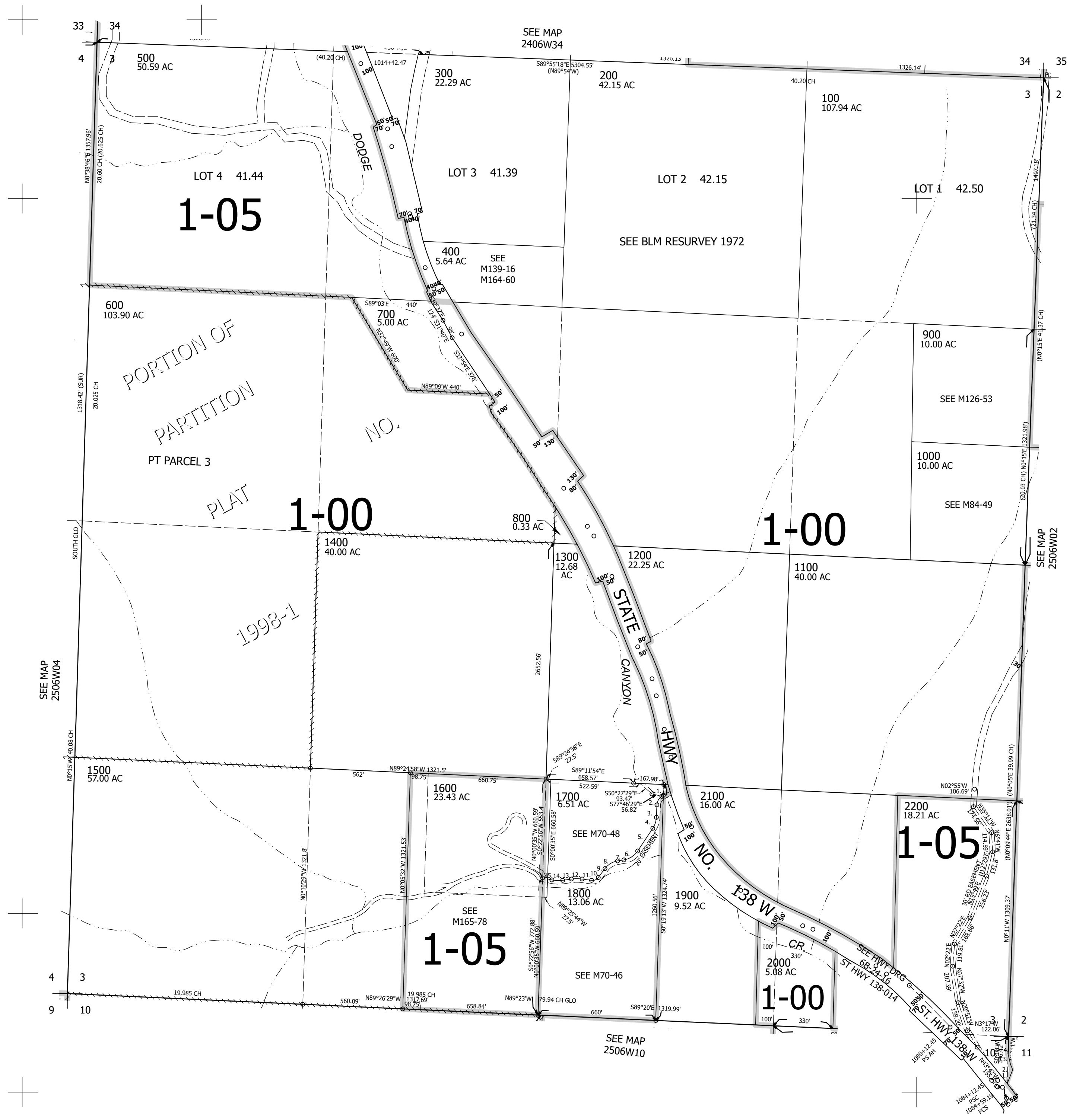
Date Exported 2026-03-23

250603

CANCELLED NOS:
301 2300 1501
1701 1801

- PARCEL 1800
1. S56°38'17"W 9.69'
 2. R=60' L=57.25'
 3. S0°58'W 69.75'
 4. R=120' L=65.14'
 5. S23°04'14"W 152.75'
 6. R=115' L=94.5'
 7. S79°09'12"W 35.71'
 8. R=110' L=84.45'
 9. S35°09'57"W 62.74'
 10. R=40' L=42.83'
 11. N58°28'52"W 53.56'
 12. R=210 L=59.87'
 13. S80°11'02"W 49.32'
 14. R=170' L=60.71'
 15. N79°21'13"W 52.73'

- PARCEL 2200
1. N19°09'E 82.47'
 2. N23°37'W 34'
 3. N15°07'W 44.2'
 4. N1°23'36"W 113.25'



SEE MAP
2506W04

SEE MAP
2406W34

SEE MAP
2506W02

SEE MAP
2506W10

Lower Right:
123°22'52"W 43°24'55"N
4155902E 650463N ft

250603