

THIS MAP WAS PREPARED FOR ASSESSMENT PURPOSE ONLY.

Upper Left:
123°22'19"W 43°26'4"N
4158617E 657294N ft

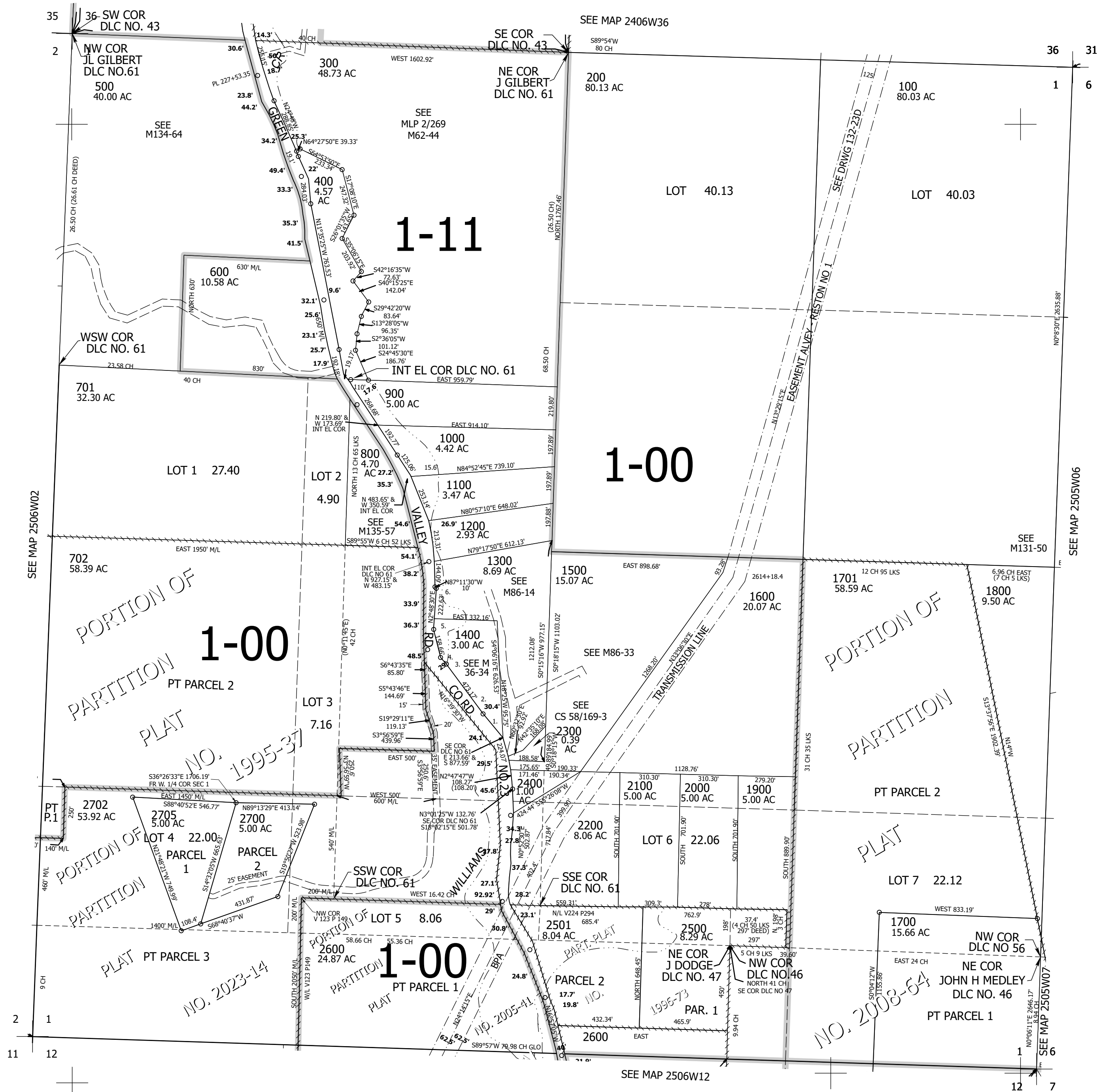
SEC.01 T.25S. R.06W. W.M.
DOUGLAS COUNTY
1" = 400'

Date Exported 2025-02-18

250601

- PARCELS 1300 & 1400
- 1. N39°00'08"W 159.75'
- 2. N38°02'26"W 334.25'
- 3. N31°15'19"W 113.13'
- 4. N7°30'W 88.04'
- 5. N0°15'W 53.44'
- 6. N0°15'W 313.42'

CANCELLED NOS:
703 2701 2703
2704 2706



250601

Lower Right:
123°20'29"W 43°24'58"N
4166466E 650338N ft