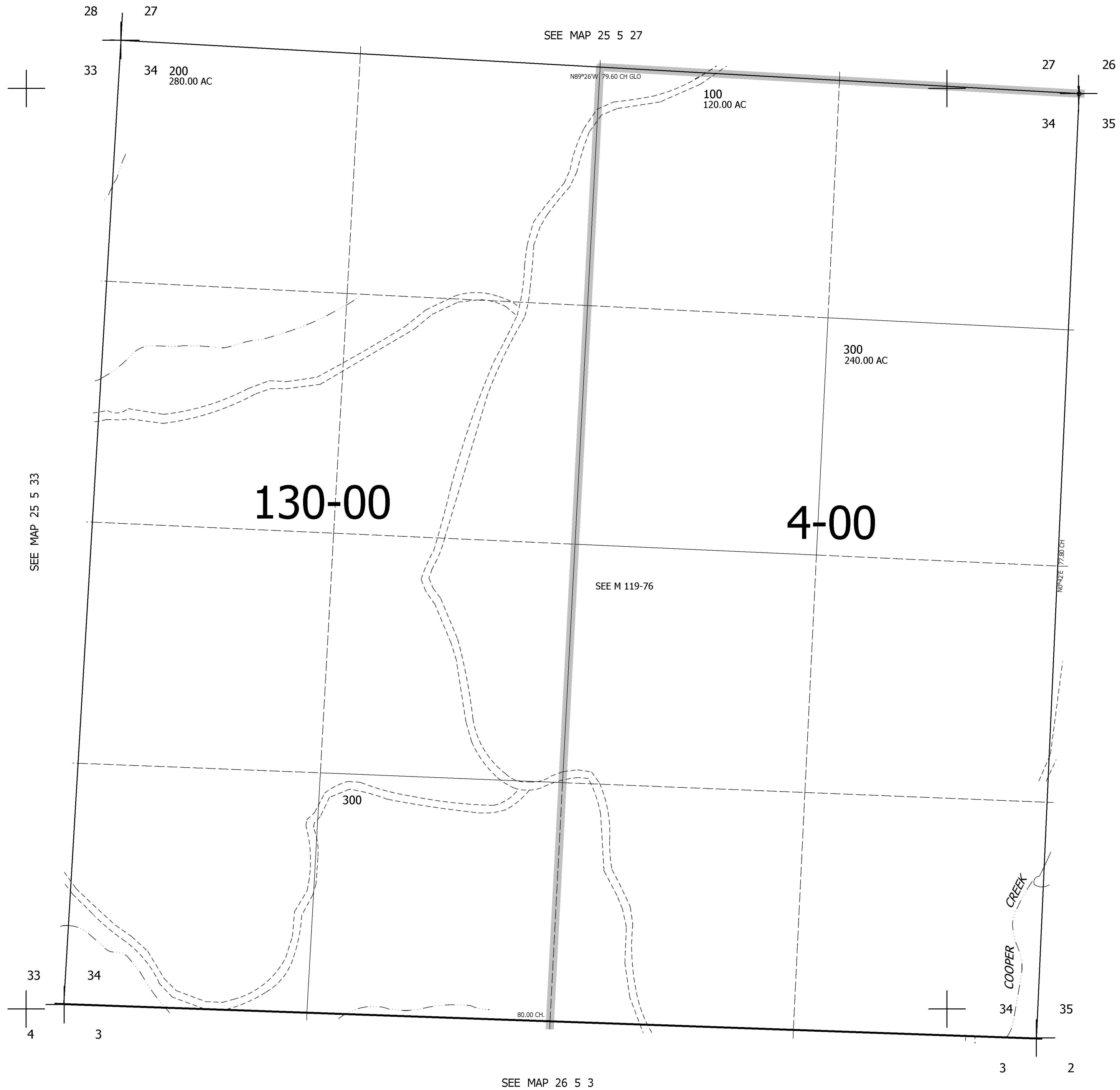


THIS MAP WAS PREPARED FOR ASSESSMENT PURPOSE ONLY.

SEC.34 T.25S. R.5W. W.M.  
DOUGLAS COUNTY  
1" = 400'

REVISED ON

25 5 34



CANCELLED NOS  
200M1 300M1

SEE MAP 25 5 35

624,000

4,185,000

25 5 34