

THIS MAP WAS PREPARED FOR ASSESSMENT PURPOSE ONLY.

NW1/4 SEC.32 T.25S. R.5W. W.M.
DOUGLAS COUNTY

REVISED ON
2-13-12

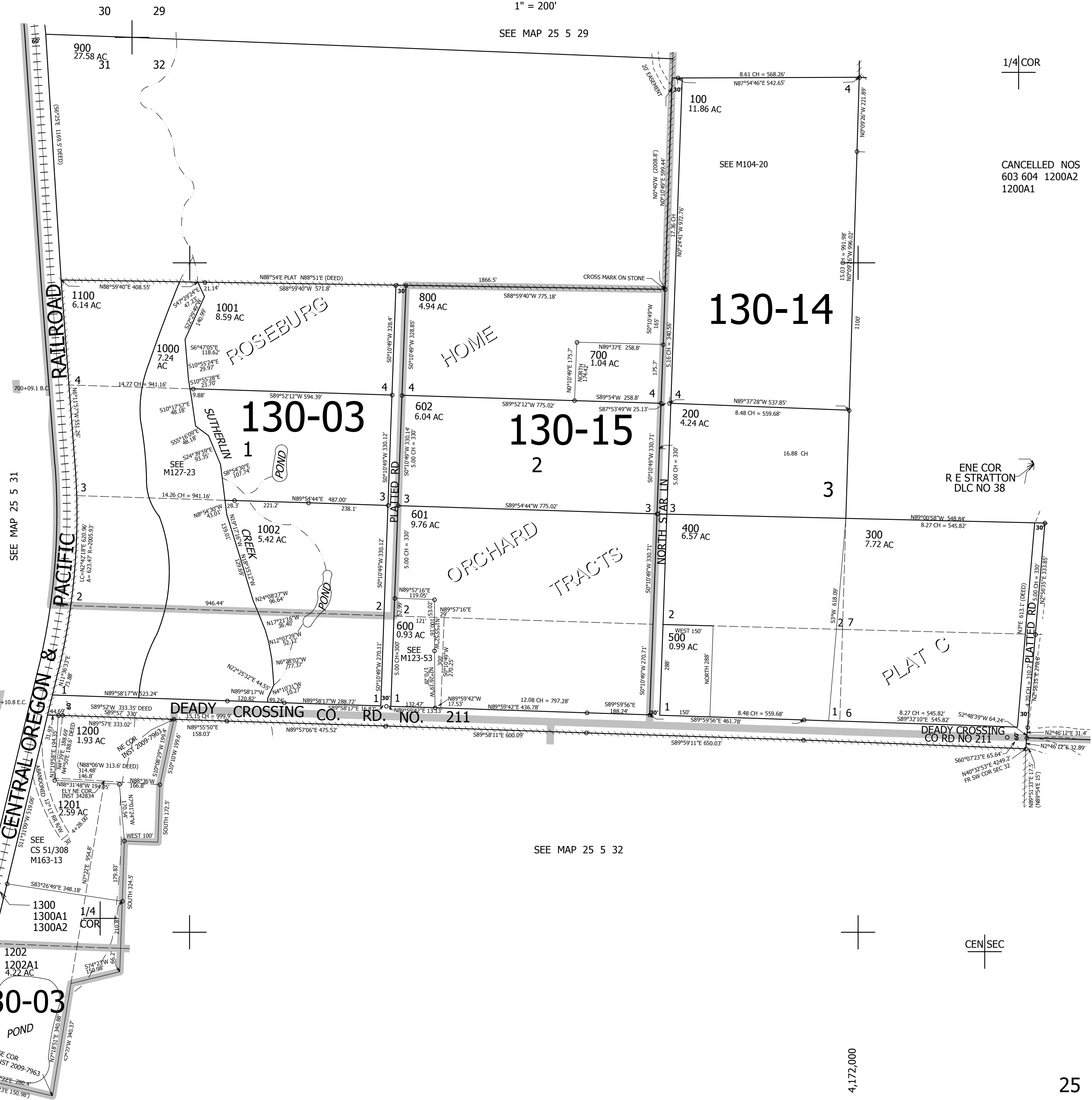
25 5 32B

1" = 200'

SEE MAP 25 5 29

1/4 COR

CANCELLED NOS
603 604 1200A2
1200A1



SEE MAP 25 5 32A

SEE MAP 25 5 32

627,000

CEN SEC

4,172,000

25 5 32B