

THIS MAP WAS PREPARED FOR ASSESSMENT PURPOSE ONLY.

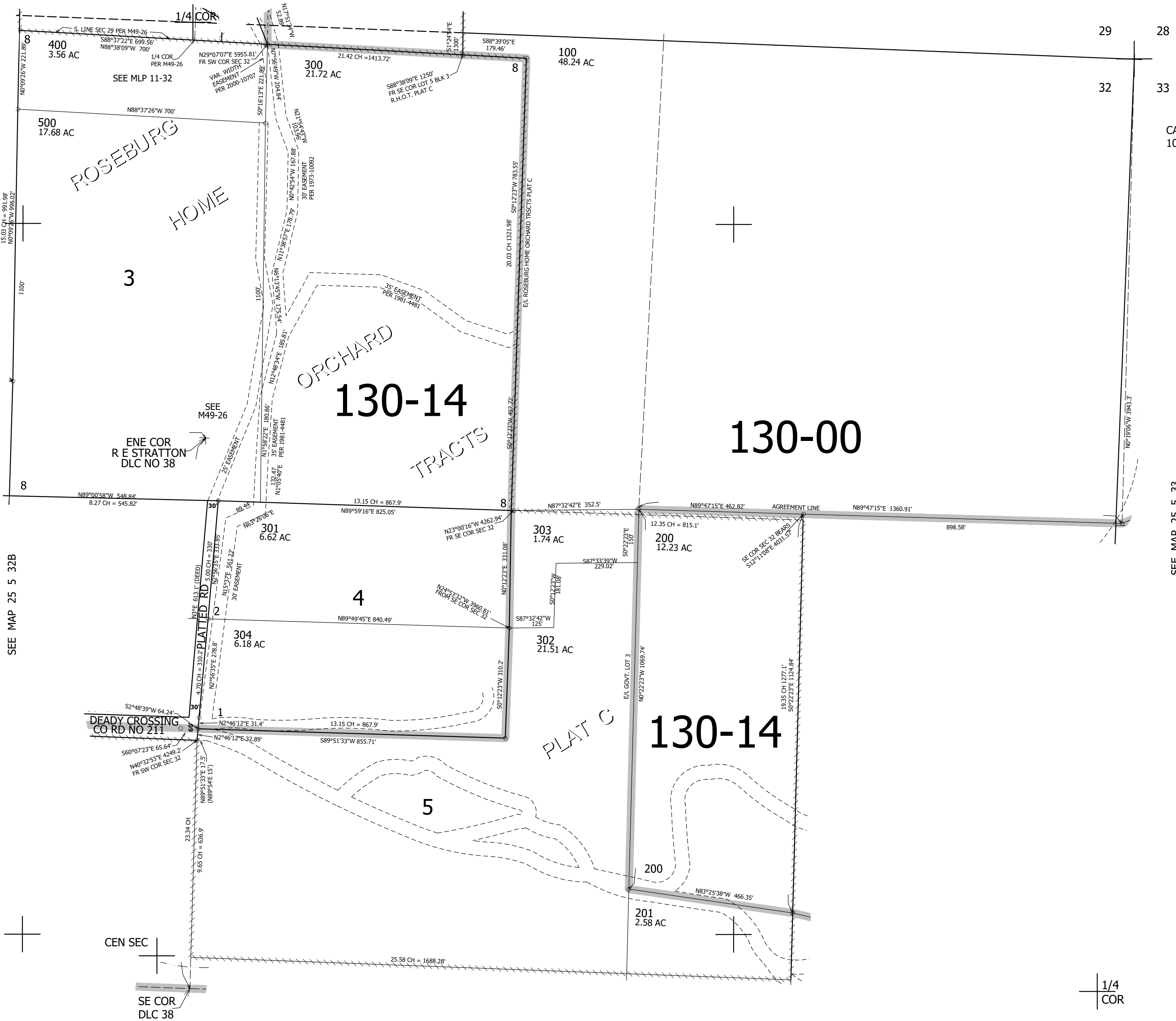
NE1/4 SEC.32 T.25S. R.5W. W.M.
DOUGLAS COUNTY

REVISED ON
2-13-12

25 5 32A

1" = 200'

SEE MAP 25 5 29



CANCELLED NOS
102 103

SEE MAP 25 5 33

SEE MAP 25 5 32B

SEE MAP 25 5 32

627,000

25 5 32A

4,174,000