

THIS MAP WAS PREPARED FOR ASSESSMENT PURPOSE ONLY.

Upper Left:
123°21'2"W 43°22'35"N
4163540E 635966N ft

SEC.30 T.25S. R.05W. W.M.
DOUGLAS COUNTY
1" = 400'

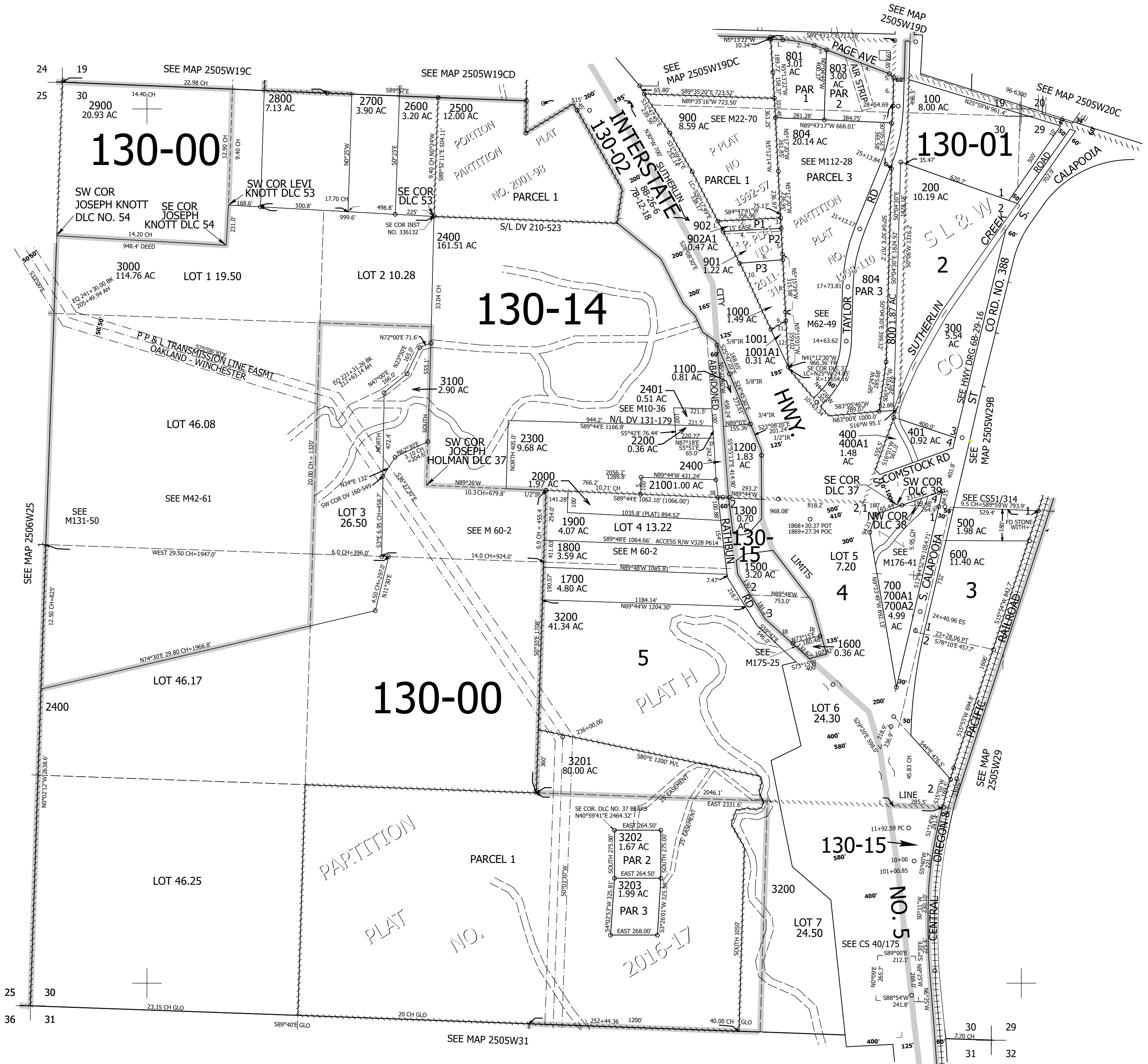
Date Exported 2024-03-12

250530
Sutherlin

CANCELLED NOS:
802 2600M1 1002
1400

- PP 1998-110
 1. S89°42'19"E 69.09'
 2. LC=S80°36'50"E 216.85'
 R=686.2'
 3. S71°31'22"E 40.83'
 4. S71°31'22"E 383.63'
 5. S49°42'46"E 35.23'
 6. S0°05'32"E 152.82'
 7. LC=S3°10'07"W 105.22'
 R=924.93'

- PP 2011-31
 1. LC=N29°21'11"W 65.75'
 R=11,459.28 A=65.75'
 2. N84°47'41"E 357.03'
 3. S5°07'46"E 60'
 4. S84°47'41"W 330.05'
 5. S5°07'46"E 179.27'
 6. S83°03'52"W 248.81'
 7. LC=N28°40'46"W 203.64'
 R=11,459.28 A=203.64'
 8. S5°07'46"E 350.5'
 9. S5°05'55"W 103.66'
 10. LC=N26°59'04"W 419.76'
 R=11,459.28 A=419.78'
 11. S5°07'46"E 294.16'
 12. LC=N25°37'43"W 263.93'
 R=11,459.28 A=263.94'



250530
Sutherlin

Lower Right:
123°19'13"W 43°21'29"N
4171389E 629011N ft