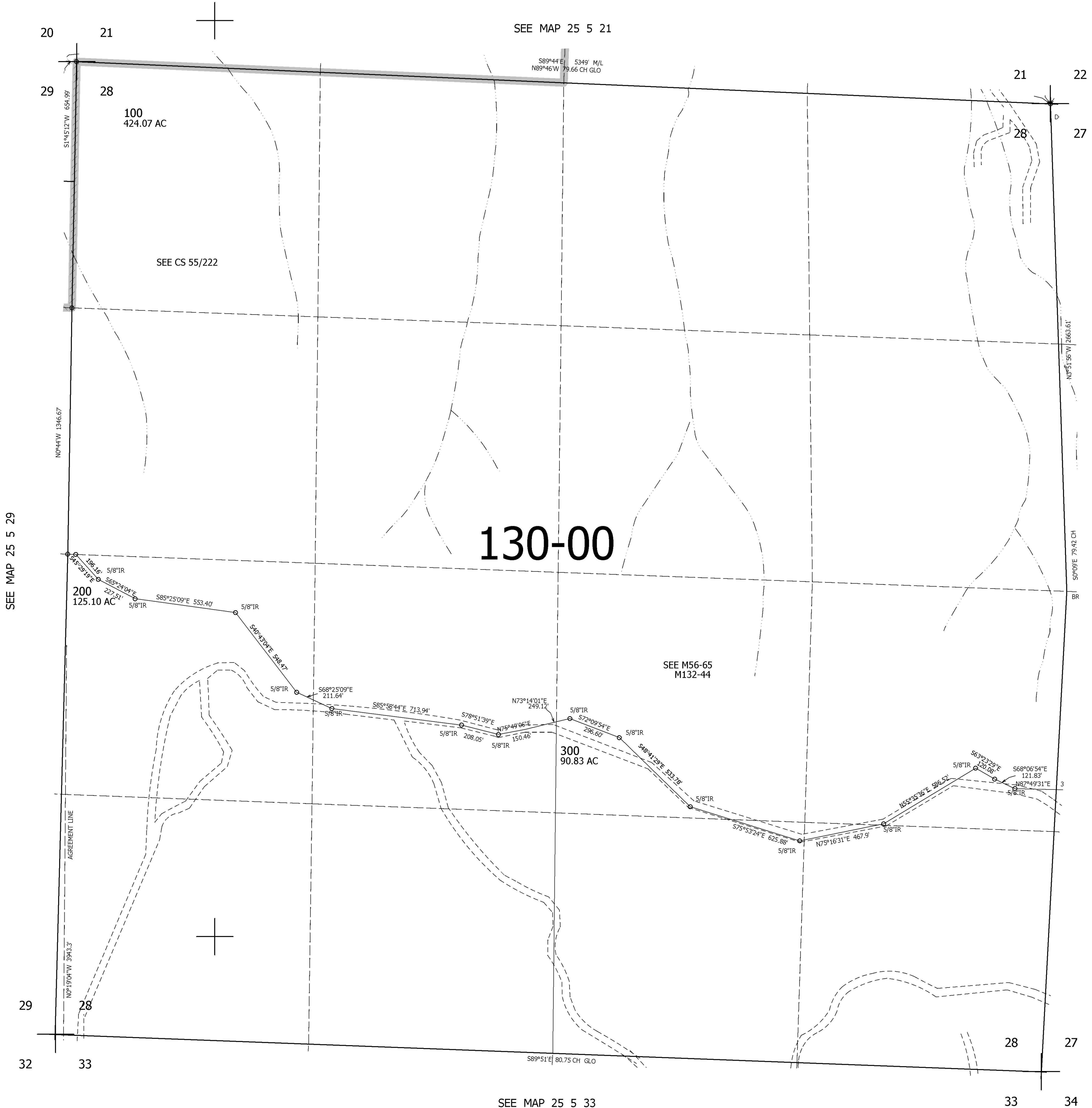


THIS MAP WAS PREPARED FOR ASSESSMENT PURPOSE ONLY.

SEC.28 T.25S. R.5W. W.M.
DOUGLAS COUNTY
1" = 400'

REVISED ON
6-6-91

25 5 28



130-00

CANCELLED NOS
201

SEE MAP 25 5 27

630,000

SEE MAP 25 5 33

4,176,000

25 5 28