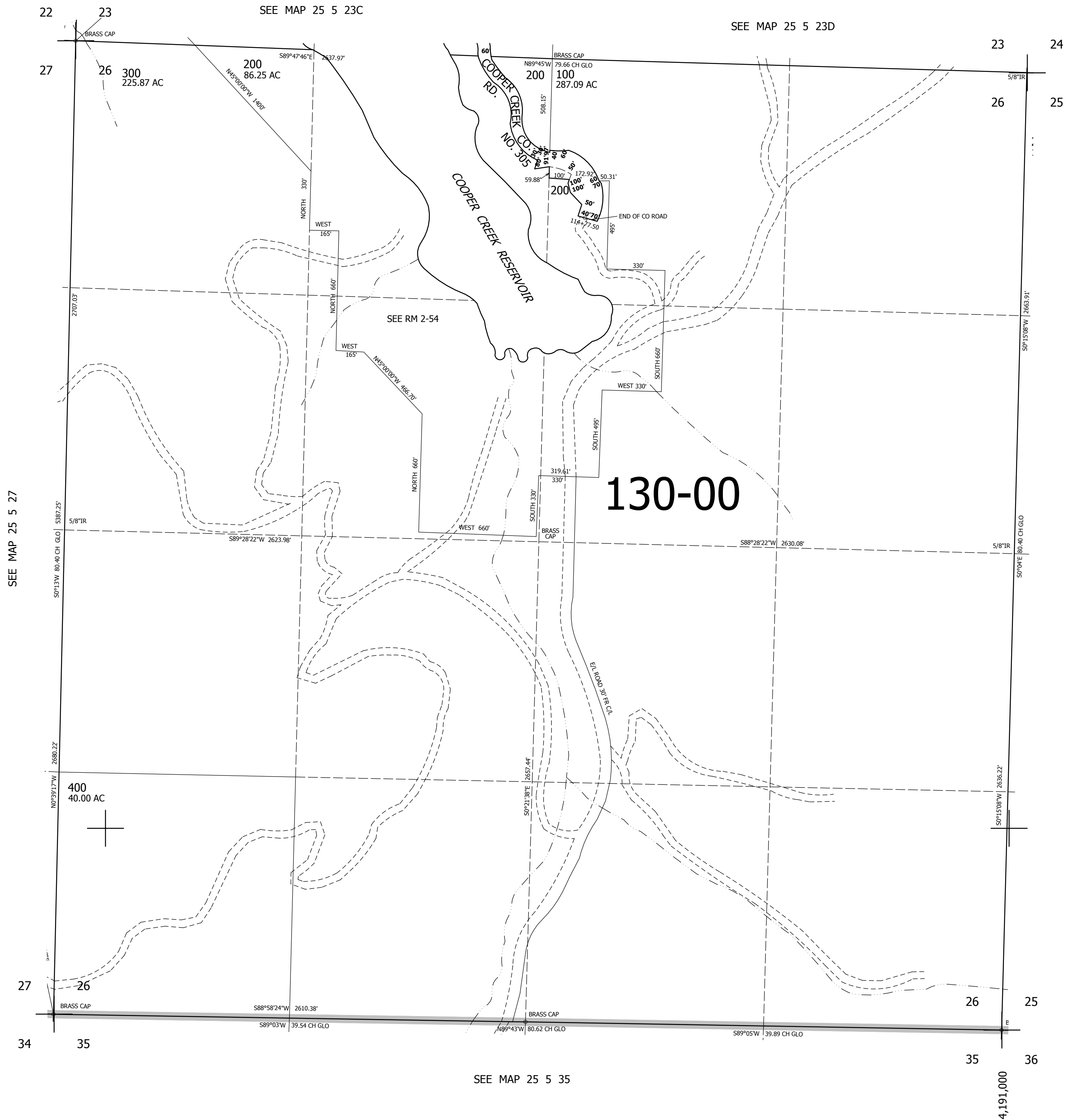


THIS MAP WAS PREPARED FOR
ASSESSMENT PURPOSE ONLY.

SEC.26 T.25S. R.5W. W.M.
DOUGLAS COUNTY
1" = 400'

REVISED ON
3-4-11

25 5 26



CANCELLED NOS

SEE MAP 25 5 25

630,000

SEE MAP 25 5 35

25 5 26

4,191,000