

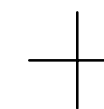
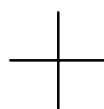
THIS MAP WAS PREPARED FOR ASSESSMENT PURPOSE ONLY.

SE1/4 SEC.24 T.25S. R.5W. W.M.
DOUGLAS COUNTY

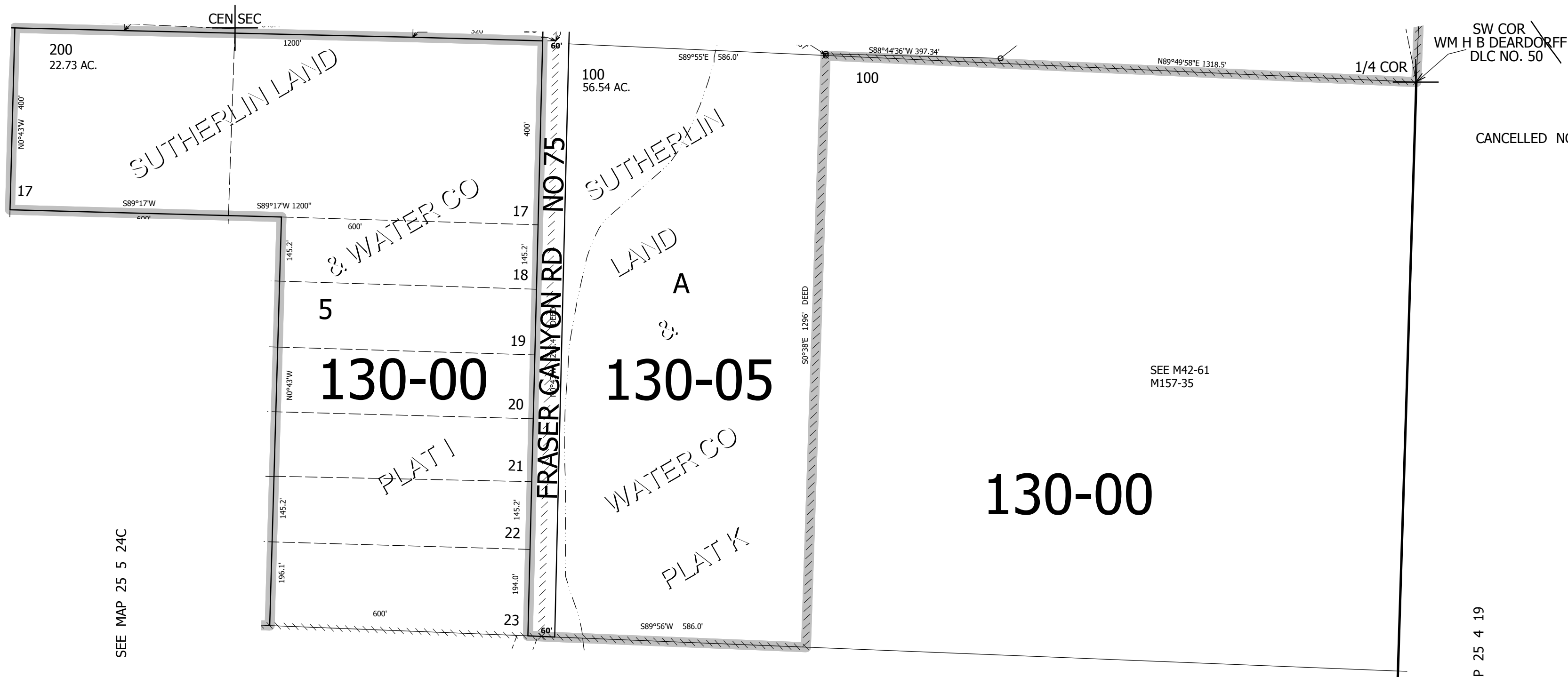
1" = 200'

REVISED ON

25 5 24D



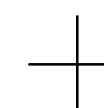
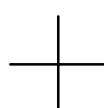
SEE MAP 25 5 24A



SEE MAP 25 5 24C

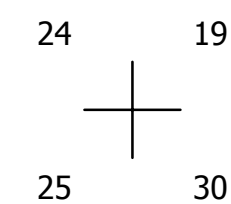
SEE MAP 25 4 19

SEE MAP 25 5 24



635,000

1/4 COR



4,196,000

25 5 24D