

THIS MAP WAS PREPARED FOR ASSESSMENT PURPOSE ONLY.

Upper Left:  
123°14'22"W 43°23'21"N  
4193204E 639672N ft

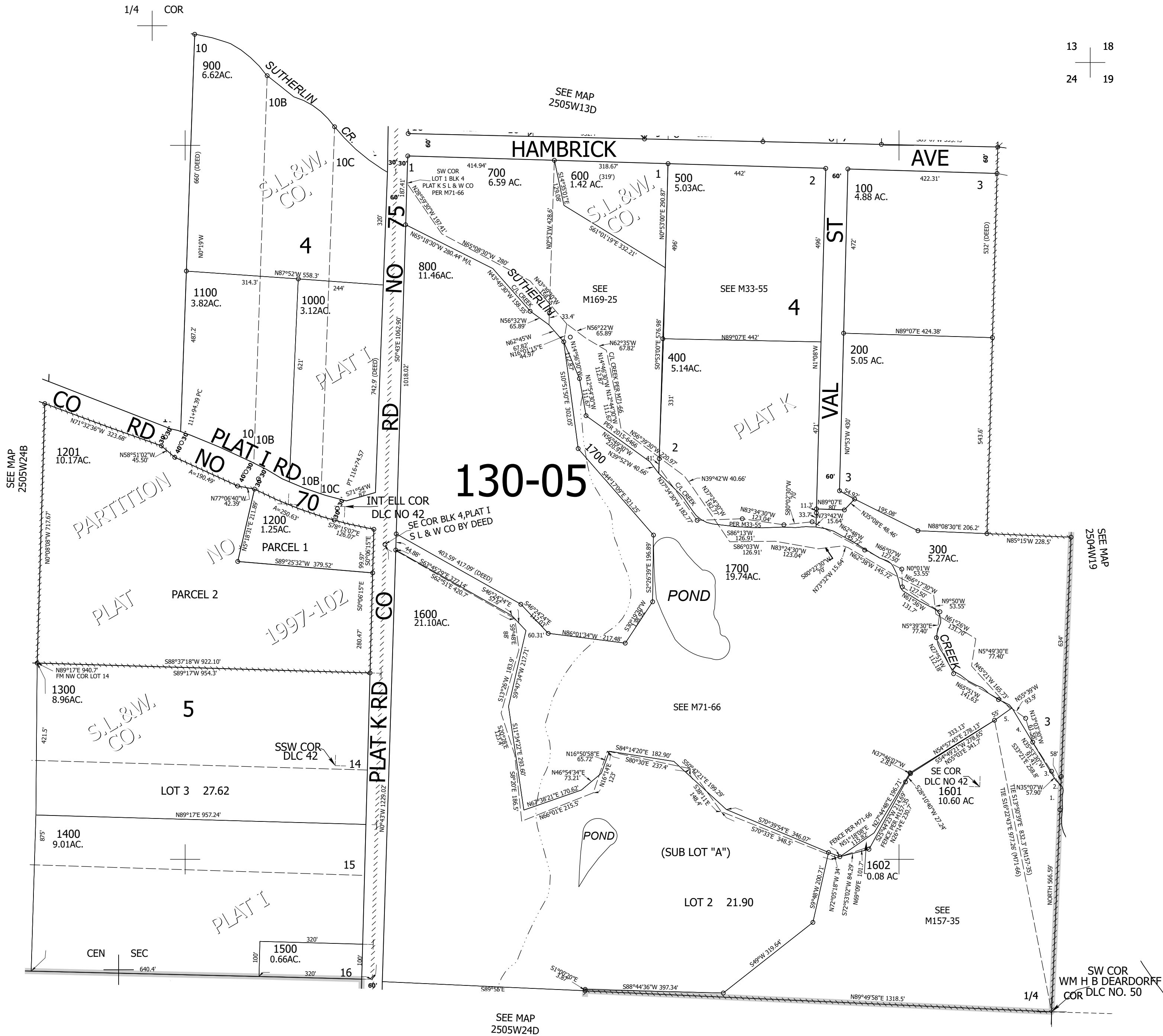
NE1/4 SEC.24 T.25S. R.05W. W.M.  
DOUGLAS COUNTY  
1" = 200'

Date Exported 2025-02-12

250524A

- TAXLOT 1601
1. NORTH 64.66'
  2. N48°20'56"W 25.74'
  3. N34°16'21"W 106.12'
  4. N33°46'21"W 131.14'
  5. S51°59'43"W 59.98'

CANCELLED NOS:  
1600M1 1700M1 601



1/4 COR

13 18  
24 19

130-05

SW COR  
WM H B DEARDORFF  
COR DLC NO. 50

250524A

Lower Right:  
123°13'28"W 43°22'48"N  
4197128E 636195N ft