

THIS MAP WAS PREPARED FOR ASSESSMENT PURPOSE ONLY.

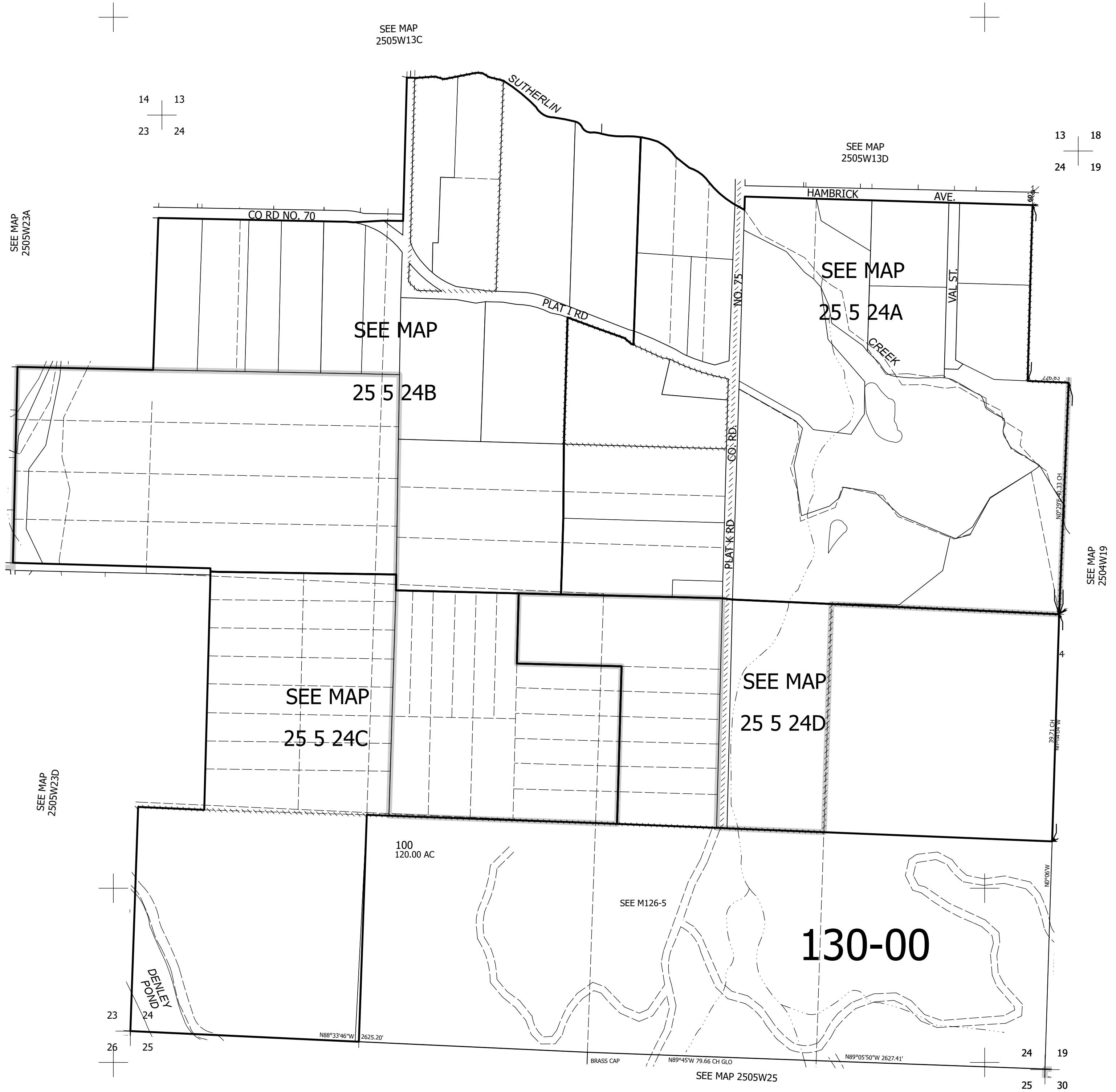
Upper Left:
123°15'12"W 43°23'26"N
4189530E 640296N ft

SEC.24 T.25S. R.05W. W.M.
DOUGLAS COUNTY
1" = 400'

Date Exported 2025-10-08

250524
& INDEX

CANCELLED NOS:



Lower Right:
123°13'23"W 43°22'20"N
4197379E 633341N ft

250524
& INDEX