

THIS MAP WAS PREPARED FOR ASSESSMENT PURPOSE ONLY.

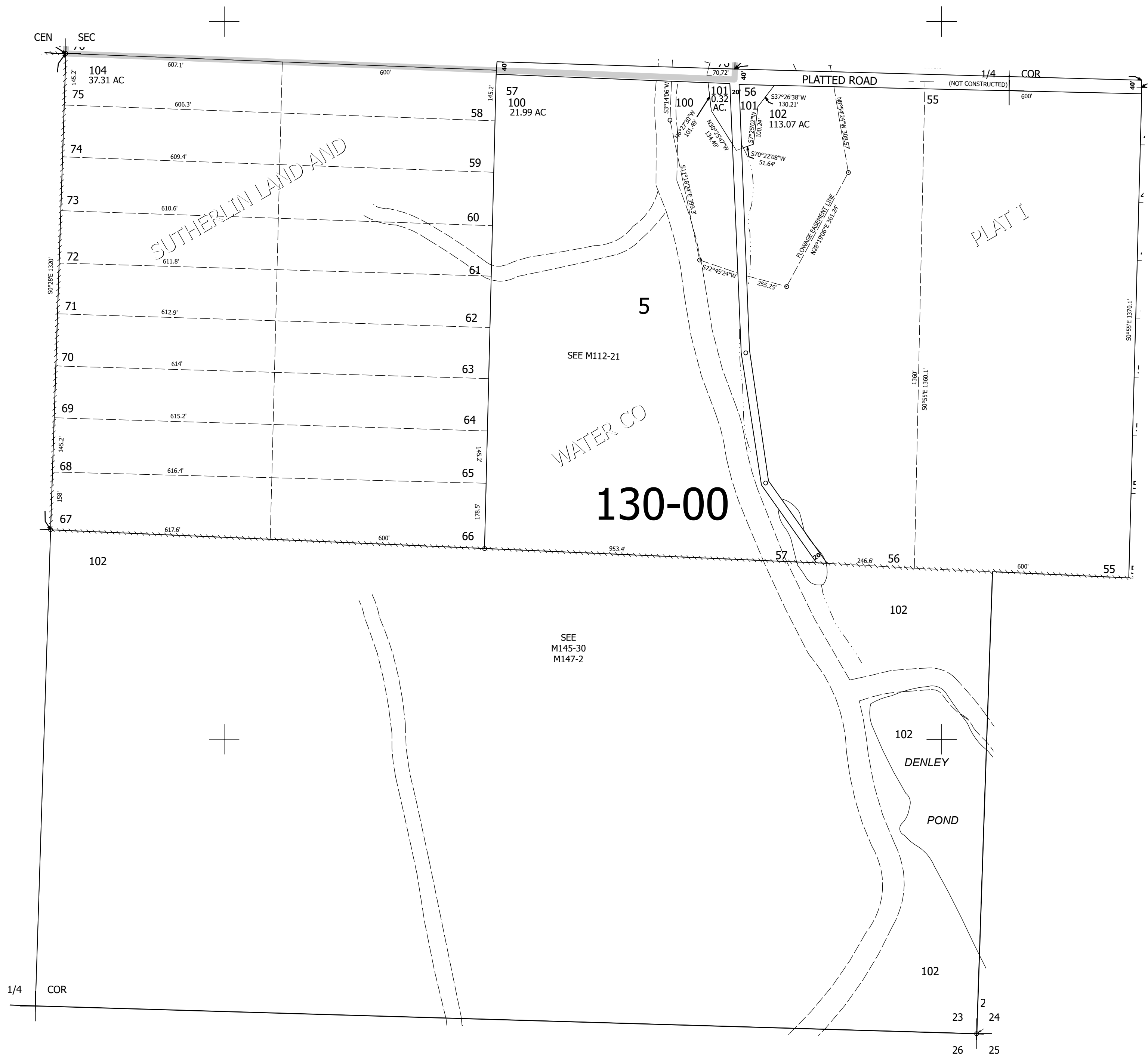
Upper Left:
123°15'32"W 43°22'56"N
4188025E 637347N ft

SE1/4 SEC.23 T.25S. R.05W. W.M.
DOUGLAS COUNTY
1" = 200'

Date Exported 2025-10-08

250523D

CANCELLED NOS:
103



250523D

Lower Right:
123°14'37"W 43°22'22"N
4191951E 633747N ft