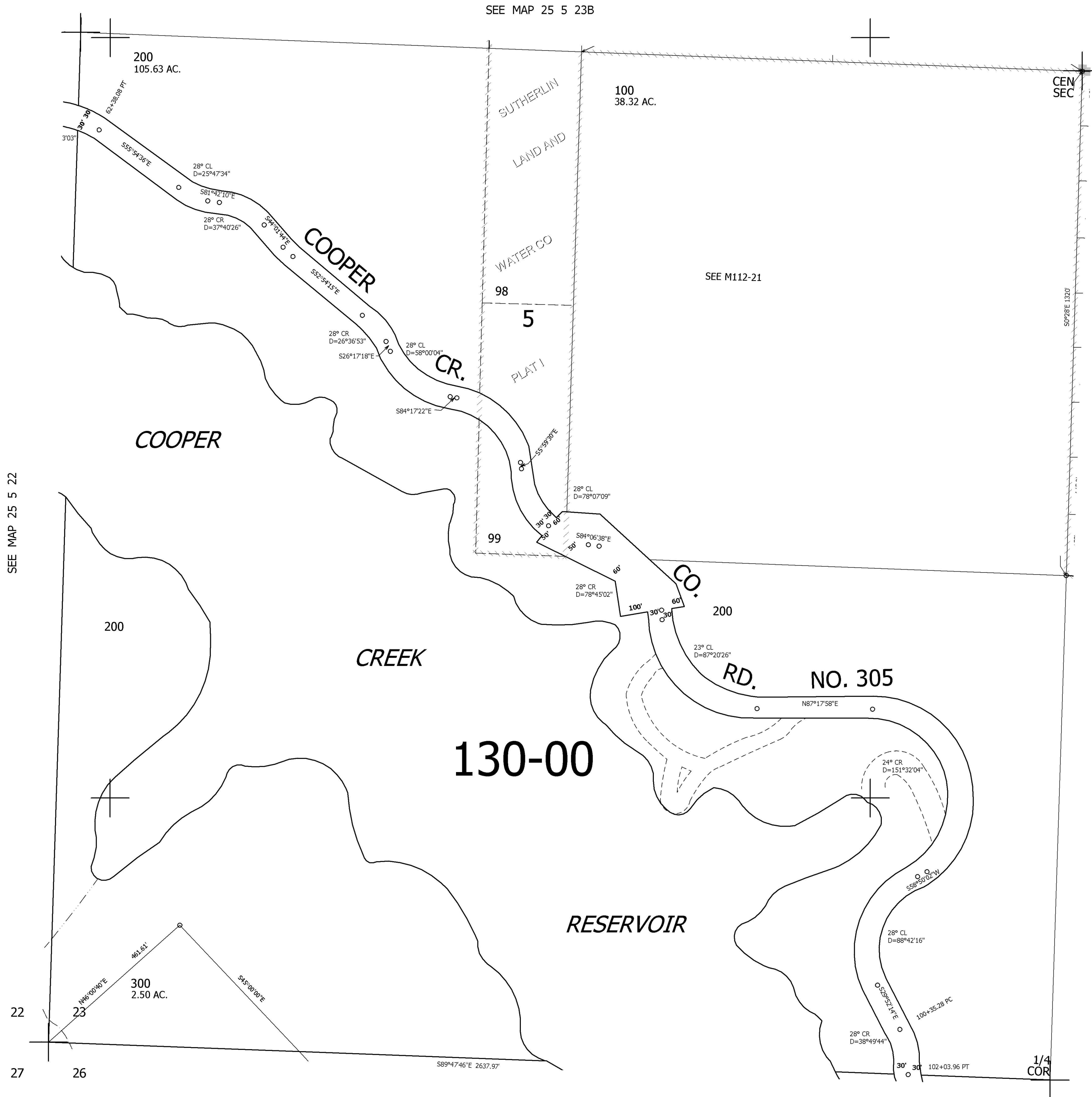


THIS MAP WAS PREPARED FOR ASSESSMENT PURPOSE ONLY.

SW1/4 SEC.23 T.25S. R.5W. W.M.
DOUGLAS COUNTY
1" = 200'

REVISED ON

25 5 23C



CANCELLED NOS

SEE MAP 25 5 23D

635,000

SEE MAP 25 5 26

4,188,000

25 5 23C