

THIS MAP WAS PREPARED FOR ASSESSMENT PURPOSE ONLY.

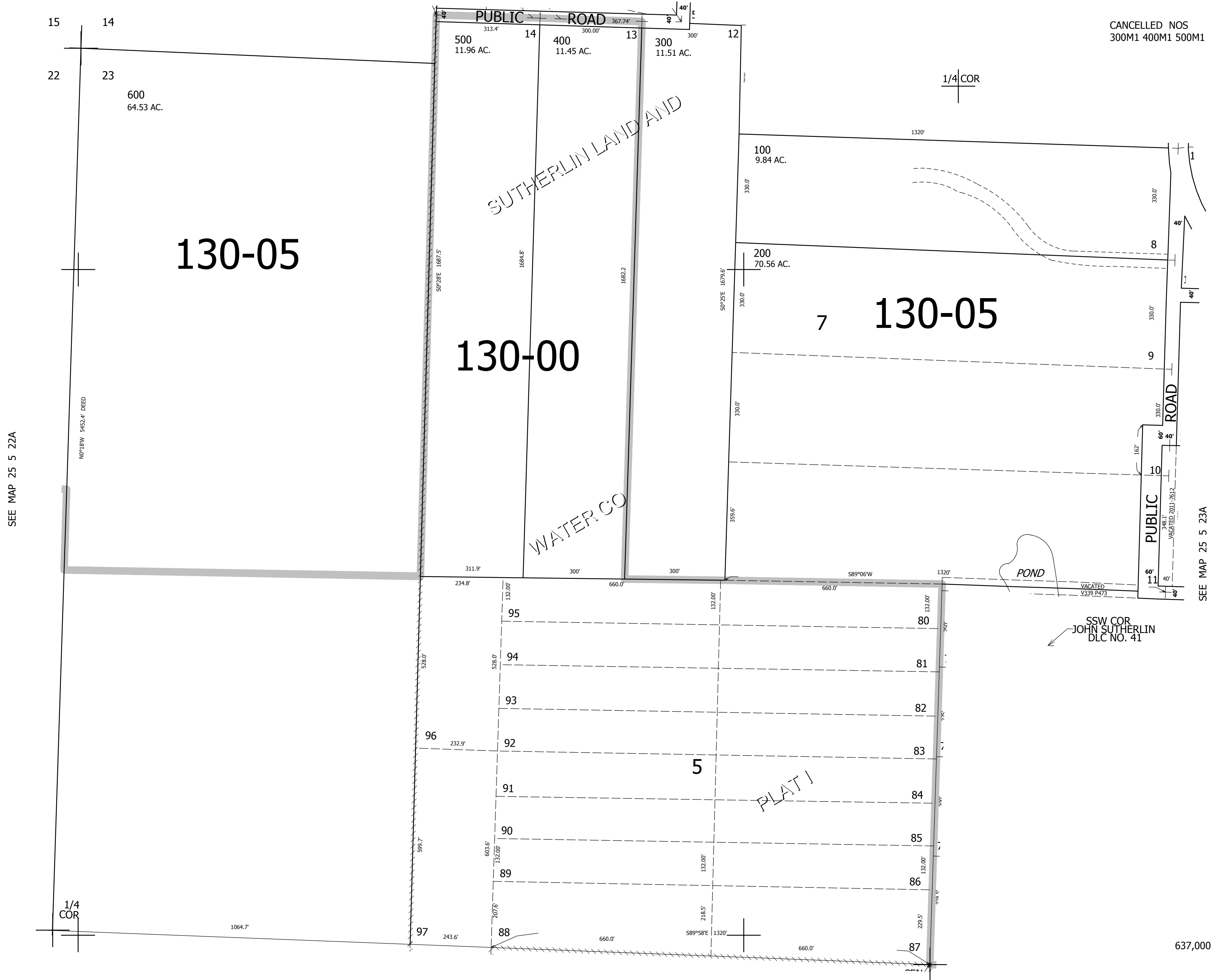
NW1/4 SEC.23 T.25S. R.5W. W.M.  
DOUGLAS COUNTY  
1" = 200'

REVISED ON  
5-23-11

25 5 23B

SEE MAP 25 5 14C

CANCELLED NOS  
300M1 400M1 500M1



SEE MAP 25 5 22A

SEE MAP 25 5 23A

SEE MAP 25 5 23C

4,188,000

637,000

25 5 23B