

THIS MAP WAS PREPARED FOR ASSESSMENT PURPOSE ONLY.

NE1/4 SEC.23 T.25S. R.5W. W.M.
DOUGLAS COUNTY
1" = 200'

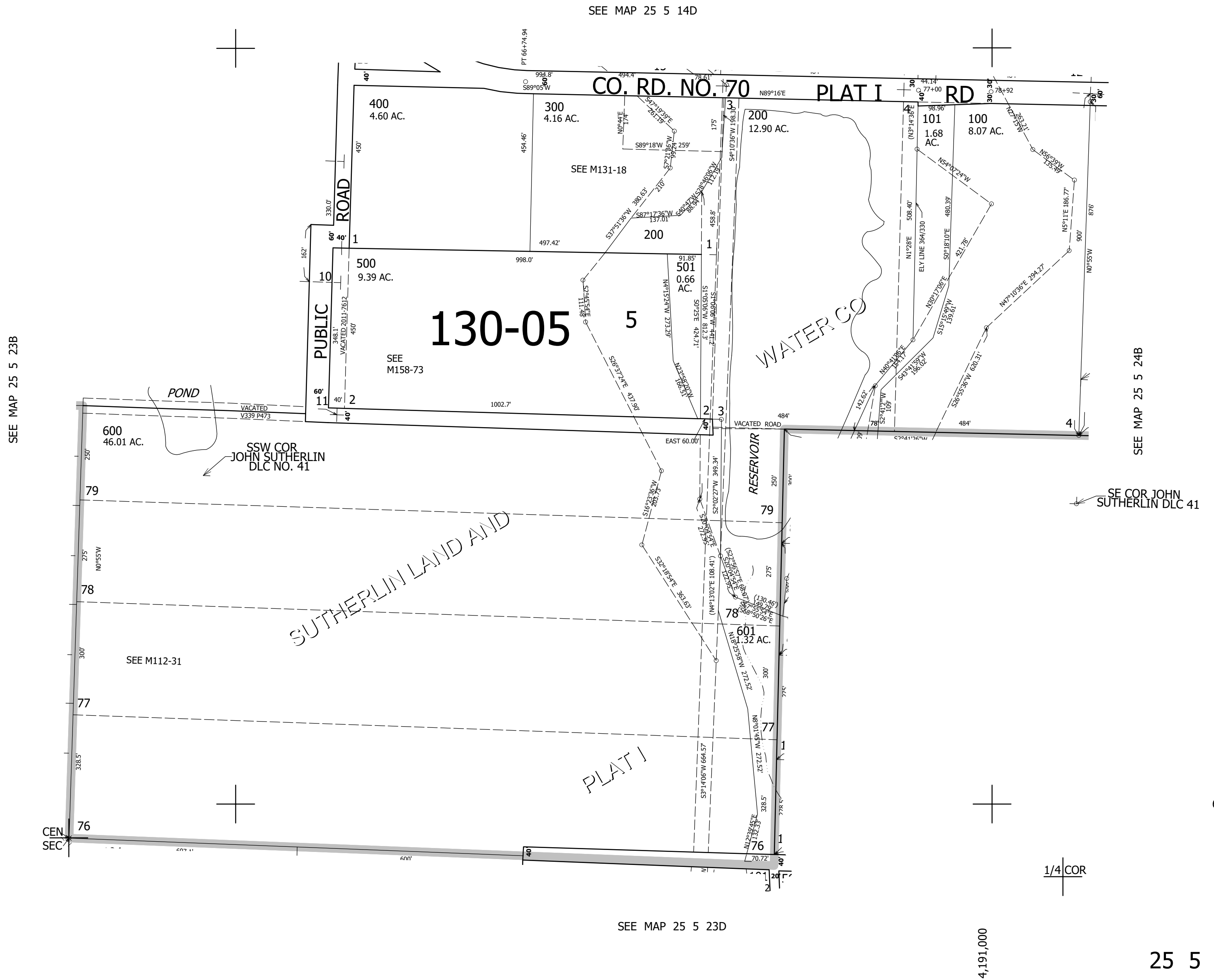
REVISED ON
5-23-11

25 5 23A

1/4 COR

14 13
23 24

CANCELLED NOS



637,000

25 5 23A